



Guilford Street, WC1N

£650 Per week

Immaculately presented one bedroom flat set within a newly refurbished building. It has an open plan kitchen reception room with wooden floors and a double bedroom with fitted storage and lots of natural light throughout.

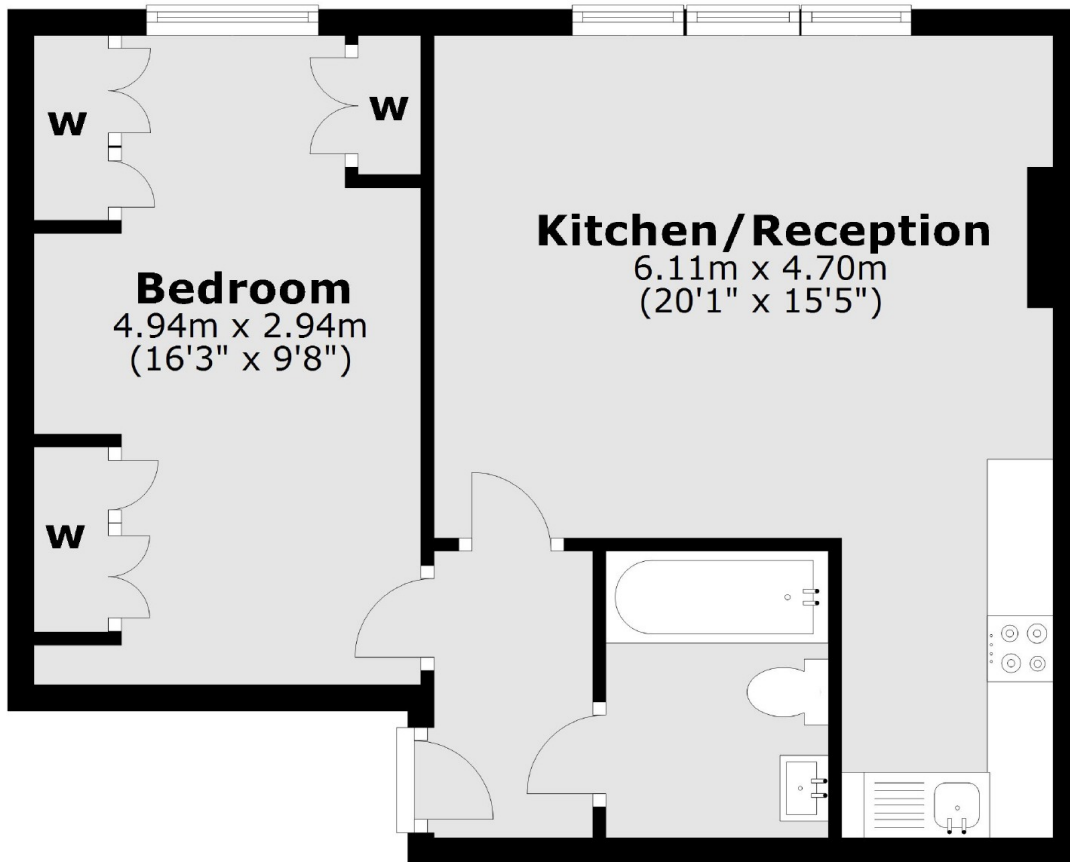
Guilford Street is located around the corner from Russell Square tube station making the flat an ideal location for the tube and for those wanting easy access to shopping facilities including the Brunswick Centre on the doorstep.

Features

- Recently Refurbished
- One Bedroom
- Open Plan Living
- Shower Room
- Period Conversion
- Russell Square Tube

Guilford Street,
London, WC1N

Third Floor



Total area: approx. 43.8 sq. metres (471.5 sq. feet)