



John Street, WC1N

£3,000 Per week

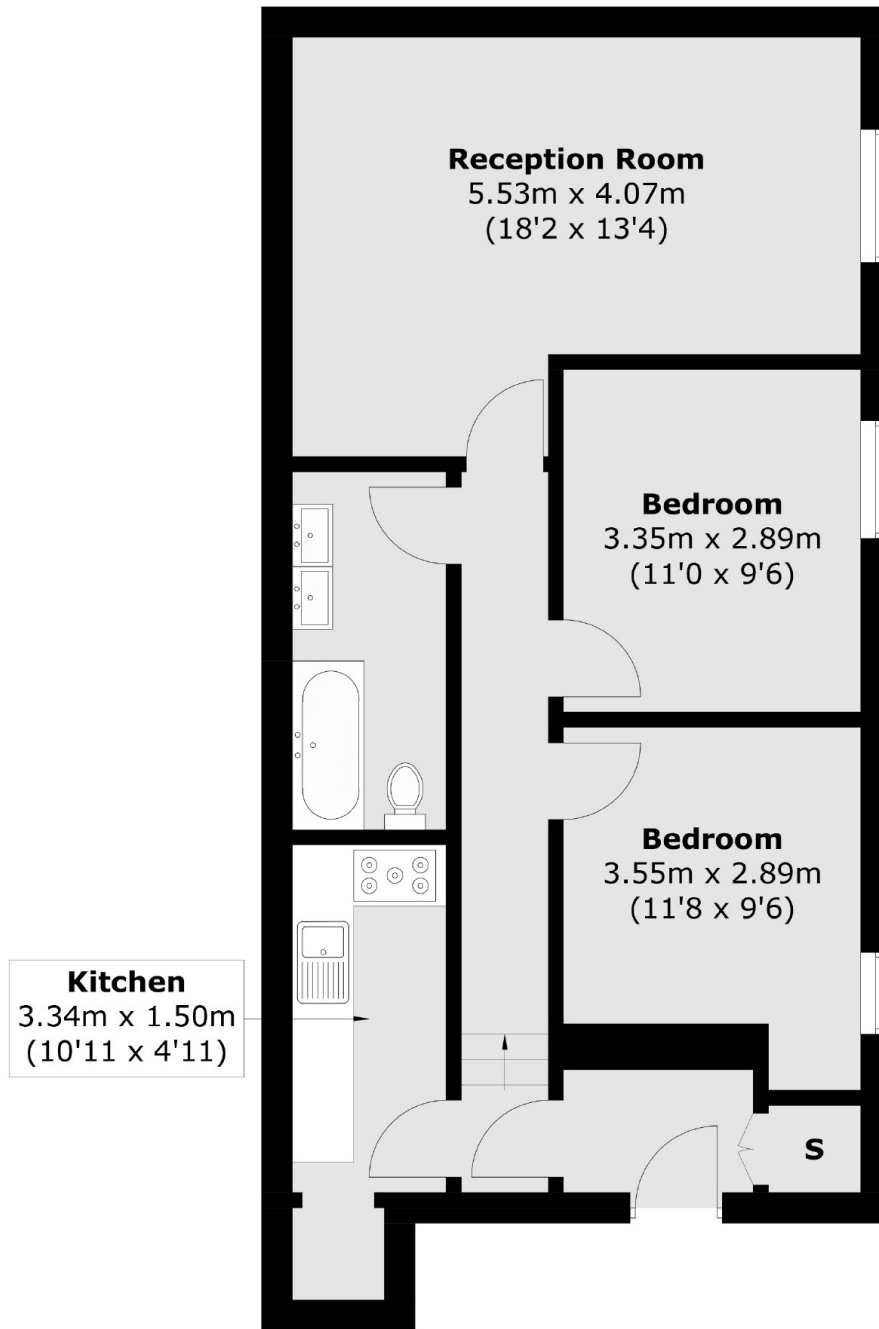
A spacious two bedroom apartment located at the top of the picturesque tree lined John Street. It has a spacious reception, separate kitchen with integrated goods, two double bedrooms and modern bathroom suite.

Located in an old bank building, this conversion on John Street is opposite Gray's Inn. Holborn, Chancery Lane and Russell Square stations are all nearby. The Brunswick Centre with its shops, restaurants, cinema and Waitrose are also very near.

Features

- Two Double Bedrooms
- Separate Kitchen
- High Ceilings
- Wooden Floors
- Great Transport Links
- Brunswick Centre Nearby

John Street,
London, WC1N



Ground Floor

Total area (approx.): 63.8 sq. m (686.7 sq. ft)