



Woburn Place, WC1H

£325,000

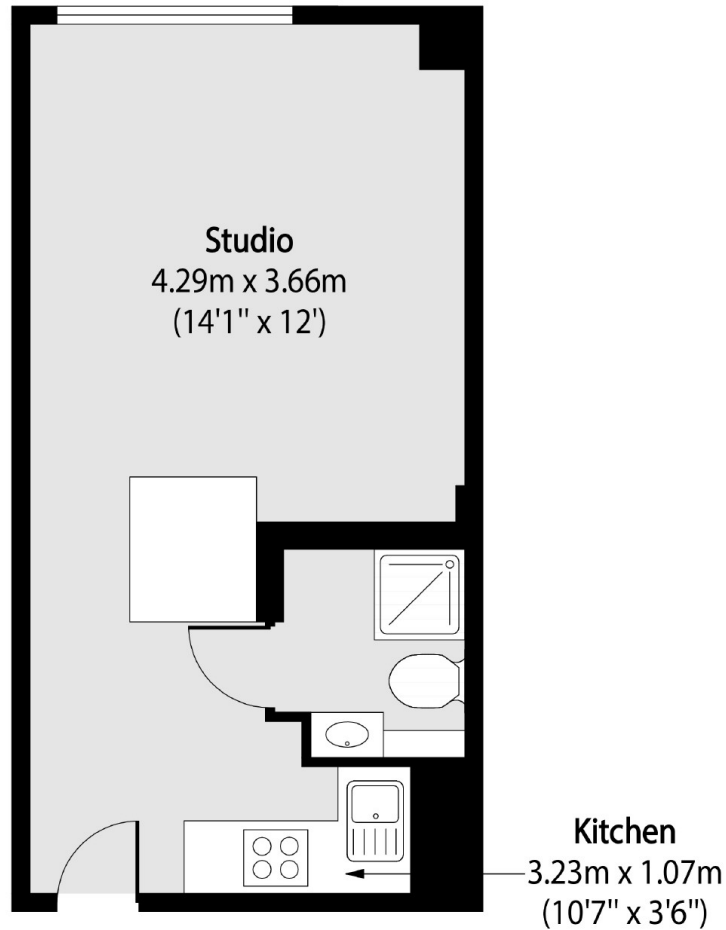
One of the larger Russell Court studios located on the 7th floor with no onward chain. The property has an open plan layout with a kitchen island, space for a washing machine and a re-fitted shower room.

Russell Court is a purpose-built mansion building moments from Russell Square and The Brunswick shopping centre which contains many well-known high street shops and restaurants including a Waitrose.

Features

- Excellent Condition
- Share Of Freehold
- Lift Access
- 24 Hr Concierge
- Close To transport
- No Onward Chain

Woburn Place, London, WC1H



Total area (approx): 26.11 sq m (281 sq. ft)