



Herbrand Street, WC1N

£675 Per week

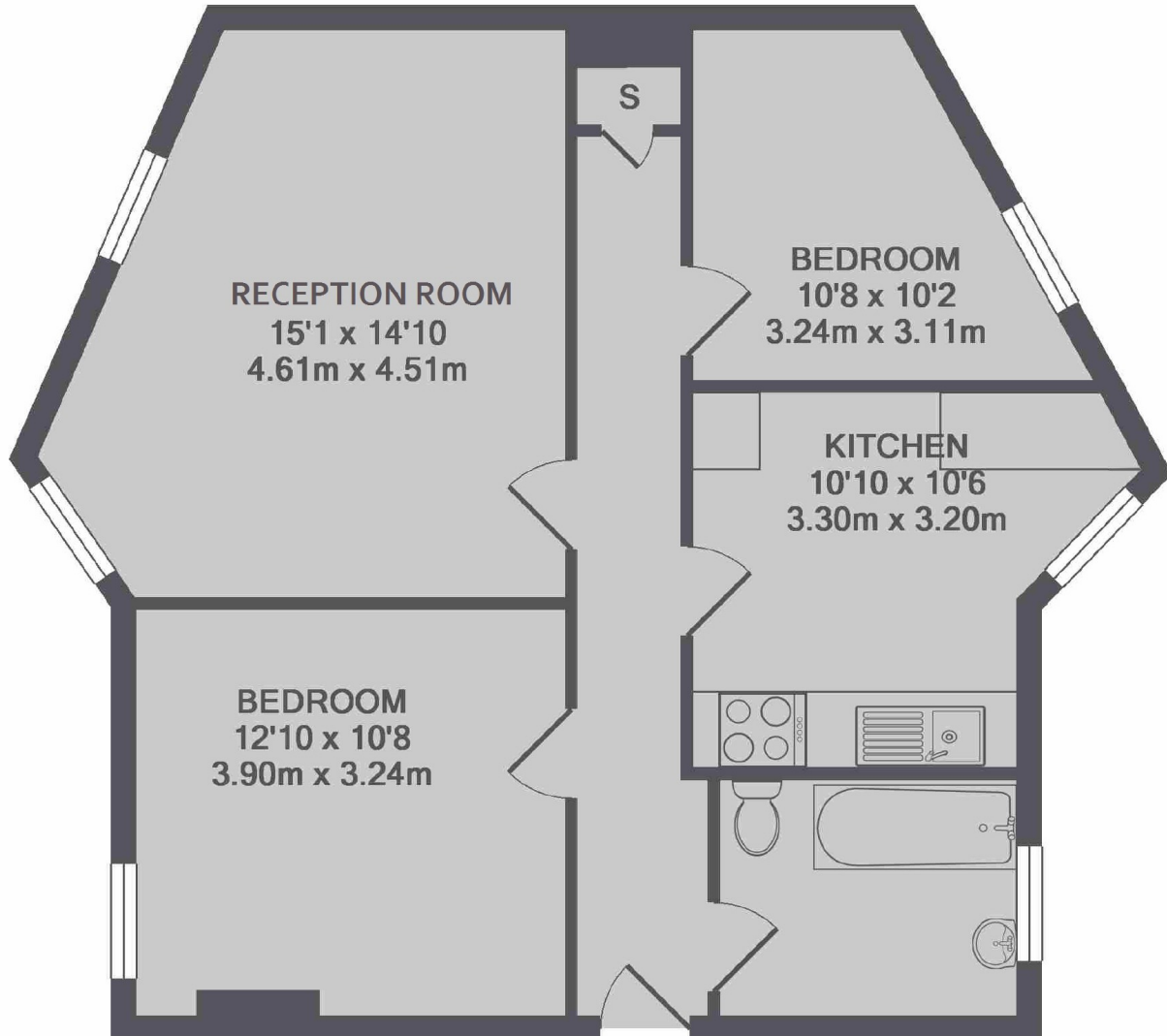
Two double bedroom flat for sharers with a spacious reception room located just behind the Brunswick Centre and therefore ideal for those wanting a short walk to UCL. Separate eat in kitchen and bathroom.

Dickens House is on Herbrand Street which is less than 100 metres from Russell Square station and the Brunswick Centre. It is extremely well located for UCL, SOAS and LSE, with Euston and Kings Cross stations also just a short walk away.

Features

- Red Brick Mansion Block
- Two Bathrooms
- Ideal For Sharers
- Eat-in Kitchen
- UCL & SOAS Nearby
- Available Furnished

Herbrand Street,
London, WC1N



TOTAL APPROX. FLOOR AREA 622 SQ.FT. (57.8 SQ.M.)

Dexters

Bloomsbury
55-56 Coram Street
London
WC1N 1HB

Lettings
020 7833 4488

Energy Rating: C. We aim to make our particulars both accurate and reliable. However they are not guaranteed; nor do they form part of an offer or contract. If you require clarification on any points then please contact us, especially if you're traveling some distance to view. Please note that appliances and heating systems have not been tested and therefore no warranties can be given as to their good working order.

 **RICS** | Regulated
Estate Agent
and Letting Agent

dexters.co.uk