



## Robert Street, NW1 £500,000

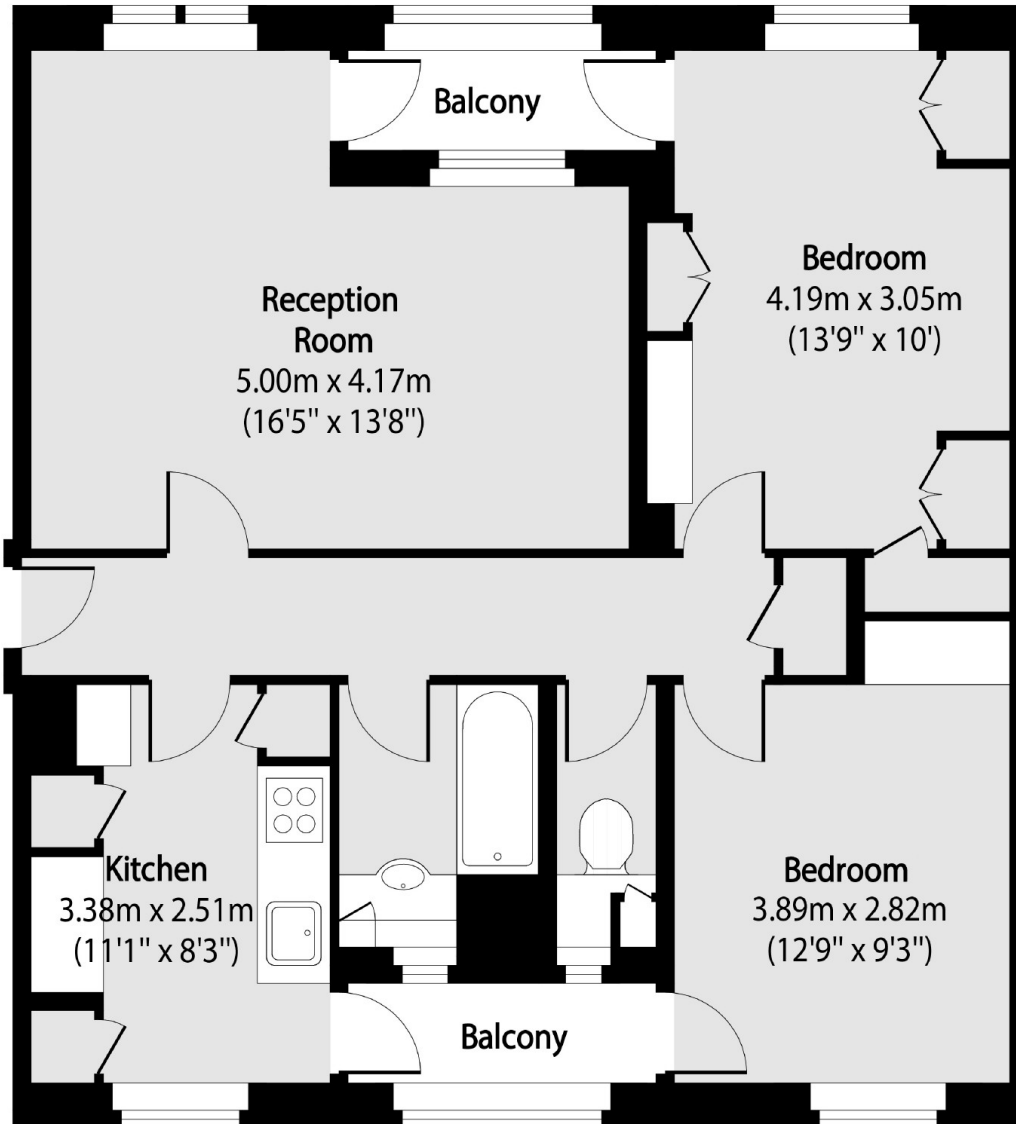
A spacious two bedrooms apartment located on the fifth floor with lift access. There is a generously sized and well-lit reception area, a separate kitchen and two private balconies.

Situated in a prime location providing easy access to Central London, the lively Camden area, and the beautiful Regents Park. The purpose-built development is well positioned, allowing for quick commutes with excellent rail connections at Euston and King's Cross stations, as well as Warren Street tube station

### Features

- Two Double Bedrooms
- Two Balconies
- Separate Kitchen
- Approx 65 sq m
- Lift Access
- Excellent Transport Links

Robert Street,  
London, NW1



Total area (approx): 64.94 sq m (699 sq. ft)

Balcony total area (approx): 4.27 sq m (46 sq. ft)