



Regent Square, WC1H

£600,000

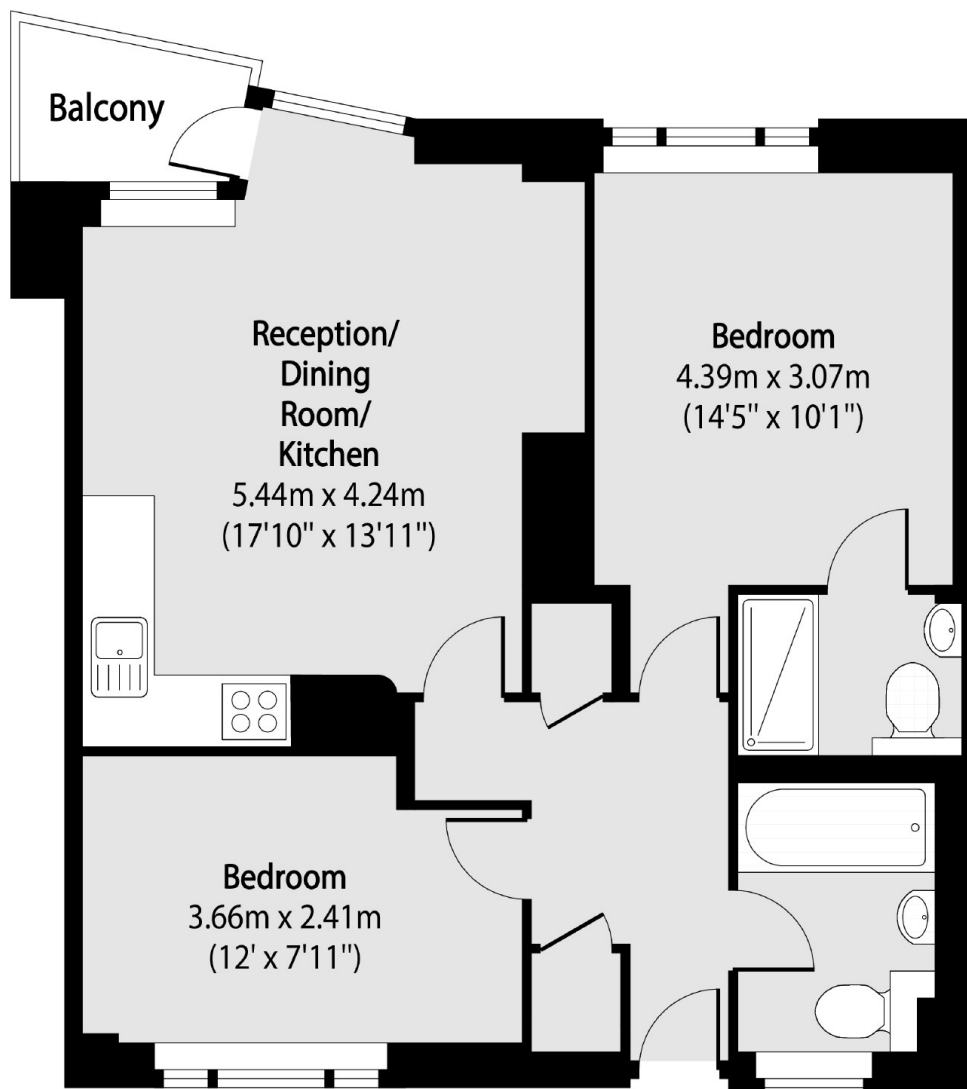
An immaculate two double bedroom home located on the beautiful Regent Square in Bloomsbury. Positioned on the ground floor, this property offers an open plan living room/kitchen, an en-suite to the master plus a private balcony.

Located on Regent Square with convenient access to both Gray's Inn Road and the Brunswick Centre. The Apartment is ideally located for both Angel and London Kings Cross offering easy access into The City and West End.

Features

- Two Double Bedrooms
- Two Bathrooms
- Private Balcony
- Excellent Condition
- Overlooking Square
- No Onward Chain

Regent Square, London, WC1H



Total area (approx): 54.63 sq m (588 sq. ft)

Balcony total area (approx): 2.23 sq m (24 sq. ft)