



Upper Woburn Place, WC1H

£550 Per week

A stylish, well presented one double bedroom apartment on the fourth floor (with lift) of this popular mansion block with 24 hour porter. This spacious apartment has wood floors and large open living area that leads to a private terrace.

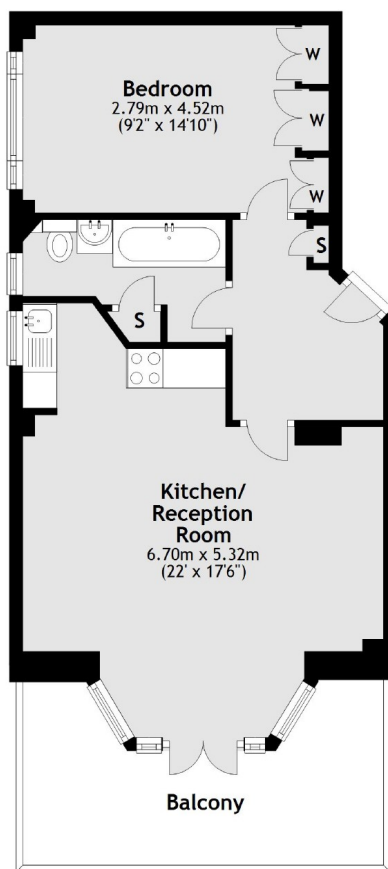
Endsleigh Court is a short distance from Euston, Russell Square, Holborn and Kings Cross. It is very convenient for UCL, SOAS and LSE. The Brunswick Centre is close by with its shops, cafes and restaurants always popular amongst the local residents.

Features

- Portered Building
- Fourth Floor
- Balcony
- Includes Heating & Hot Water
- Great Access for UCL
- Wooden Floors

Upper Woburn Place, London, WC1H

Fourth Floor



Main area: Approx. 49.3 sq. metres (531.1 sq. feet)
Plus balconies, approx. 12.7 sq. metres (136.9 sq. feet)