



Judd Street, WC1H

£576 Per week

A beautifully appointed, one double bedroom home with a private terrace. The property includes an integrated kitchen, parquet flooring, excellent storage and a re-fitted bathroom.

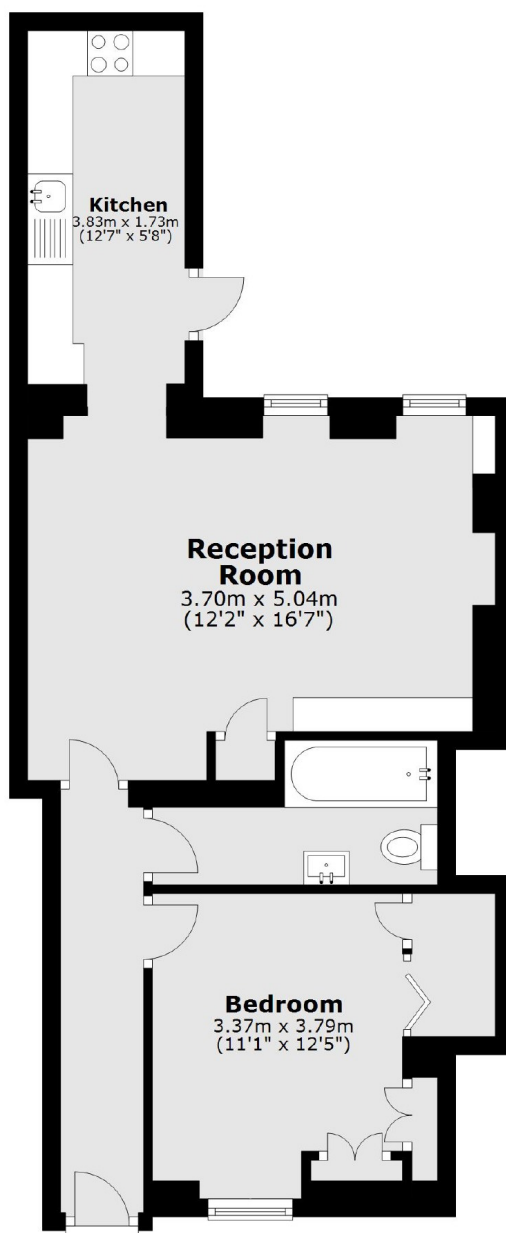
Judd Street is located a short walk away from Kings Cross, Euston and Russell Square tube station making it perfect for those who want to be in the hub of Bloomsbury with transport links on their doorstep.

Features

- Georgian Conversion
- Private Garden Terrace
- One Double Bedroom
- Separate Re-fitted Kitchen
- Excellent Condition
- Great Location

Judd Street,
London, WC1H

Basement



Total area: approx. 48.2 sq. metres (518.6 sq. feet)