



## Herbrand Street, WC1N

£625 Per week

A well presented flat in the heart of Bloomsbury. Neutrally decorated, the flat has wooden floors throughout, two bedrooms, a spacious lounge and a separate eat-in kitchen.

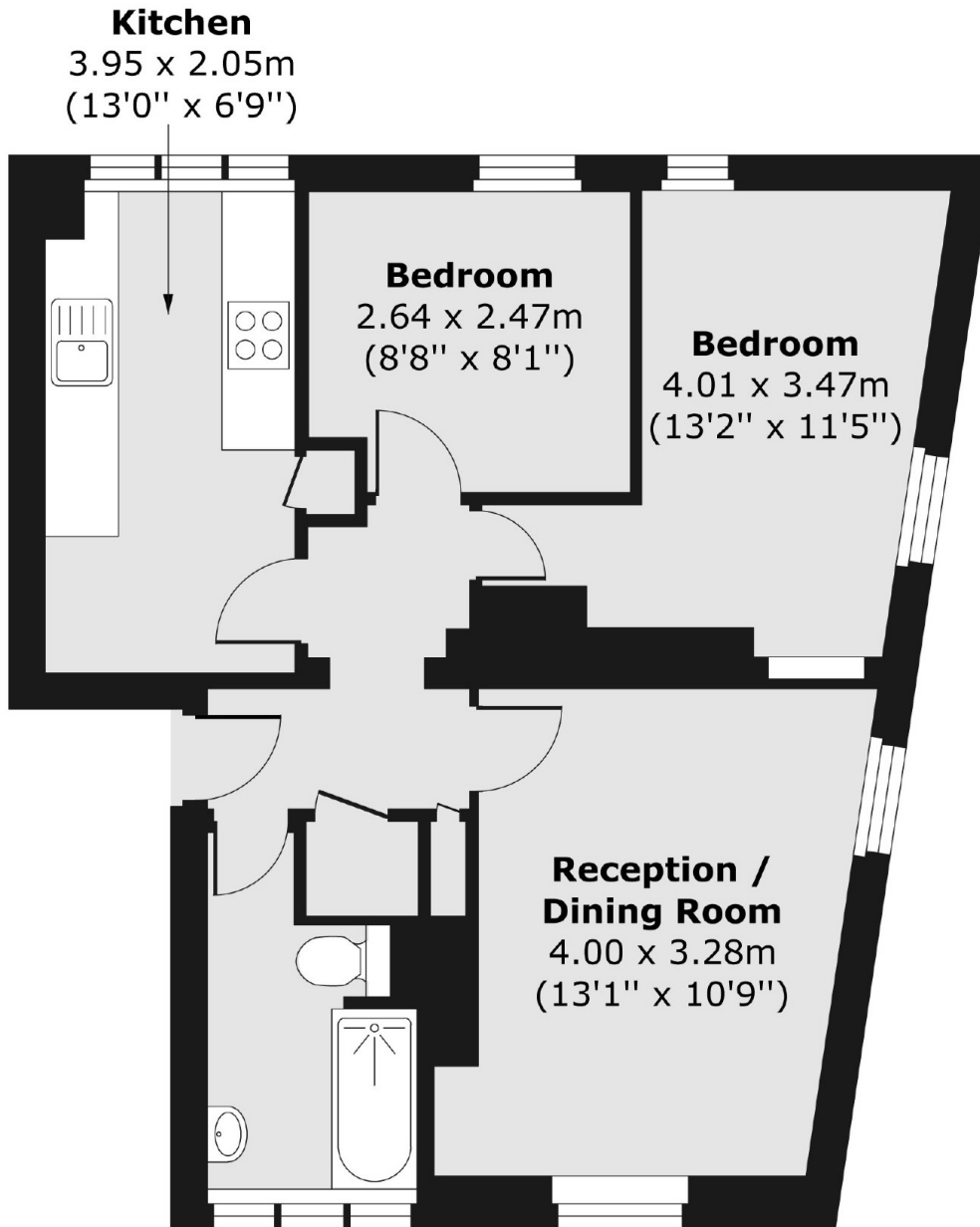
Russell Square and mainline stations Euston, St Pancras and Kings Cross are all within walking distance. The Brunswick Centre is located only moments away contains a wide selection of high street retailers and restaurants.

### Features

Red Brick Mansion Block  
Two Bedrooms  
Ideal For Sharers  
Eat-in Kitchen  
UCL & SOAS Nearby  
Available Now

Herbrand Street,  
London, WC1N

## Second Floor



Total area (approx.) 49.83 sq. m (536 sq. ft)