



Woburn Place, WC1H £320,000

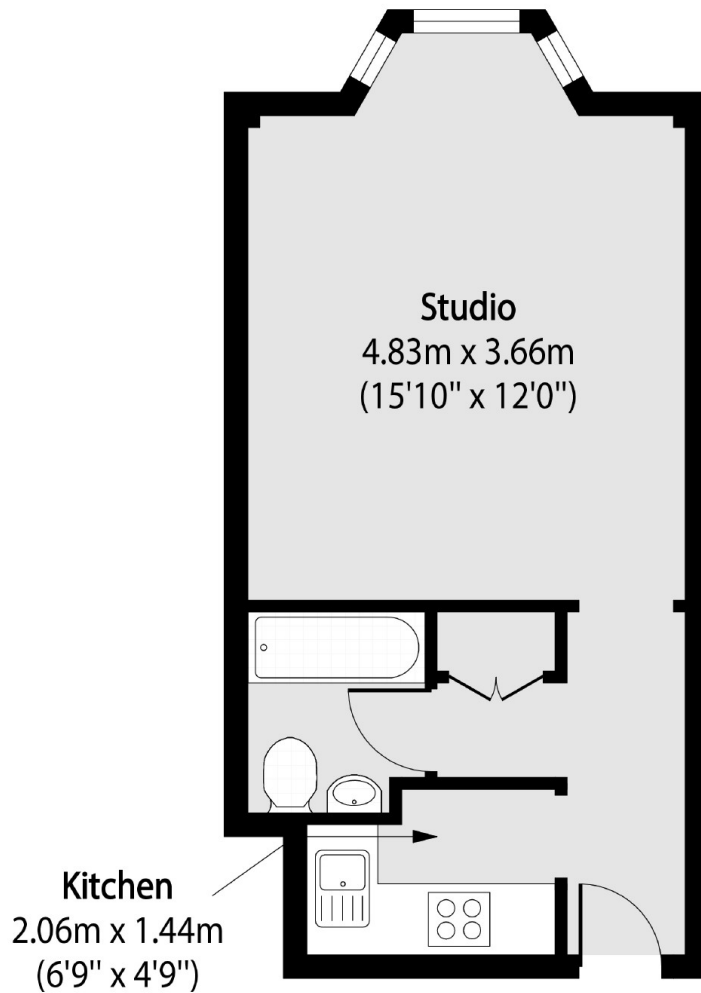
A beautifully appointed 4th floor studio apartment located within a portered 1930's mansion block. The property is in excellent condition with double glazed windows and no onward chain.

Russell Court occupies a prominent position within central London which offers excellent transport links and good access to top restaurants, bars, shopping and Universities.

Features

- Studio Apartment
- Share Of Freehold
- Separate Kitchen
- Lift Access
- 24 Hour Porter
- No Onward Chain

Woburn Place, London, WC1H



Total area (approx): 26.70 sq m (287 sq. ft)