



## Russell Square, WC1B

£1,100 Per week

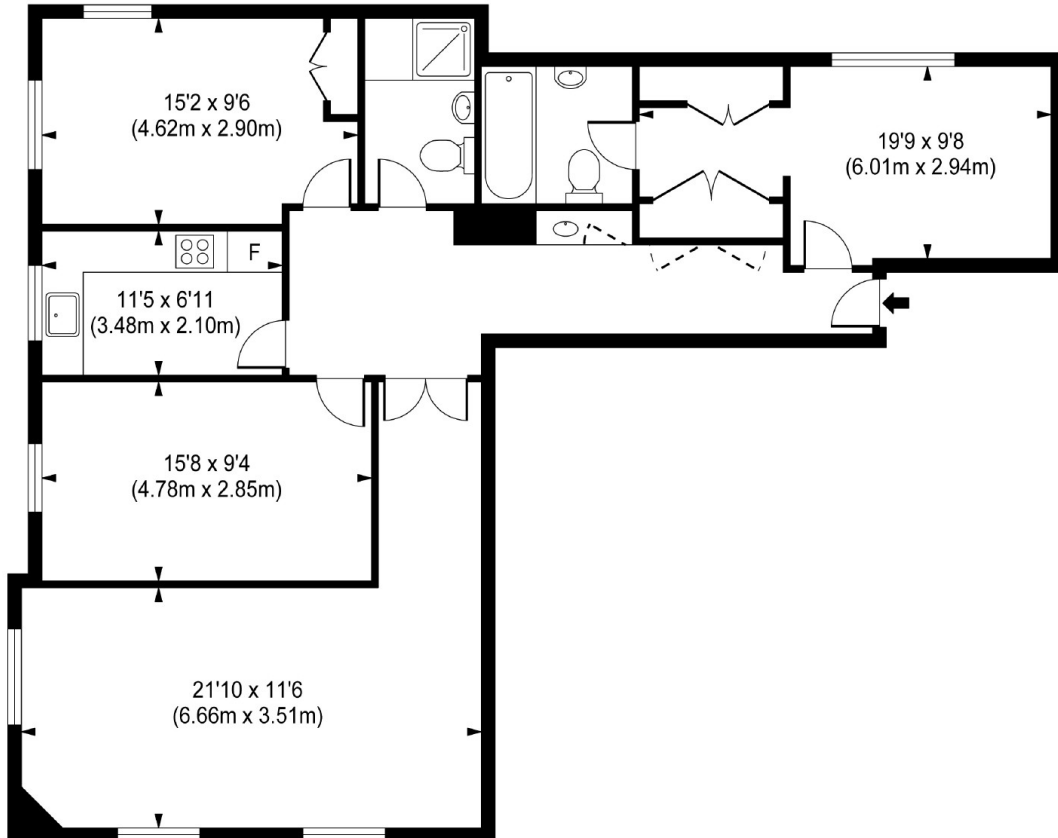
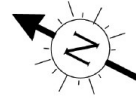
An extremely well presented three double bedroom apartment on the sixth floor of one of Bloomsbury's premier mansion blocks. It has two bathrooms plus a WC, a separate kitchen and a spacious living area - Available from August

Located on Russell Square and just moments from Russell Square tube station with Holborn, Kings Cross and Euston stations also nearby. The Brunswick Centre with a selection of shops, restaurants and a cinema is just 0.2 Miles away.

### Features

- Three Double Bedrooms
- Two Bathrooms & WC
- Water Included
- Porter
- Gym & Sauna
- Lift

# Russell Square, London, WC1B



Gross Internal Area 1141 sq ft/ 106 sq meters

Whilst every attempt had been made to ensure the accuracy of the floorplan shown, all the measurements, positioning fixtures, fittings and any other data shown are an approximate interpretation for illustrative purposes only and are not for scale. No responsibility is taken for any error, omission, miss-statement or use of data shown.