



Gray's Inn Road, WC1X £475,000

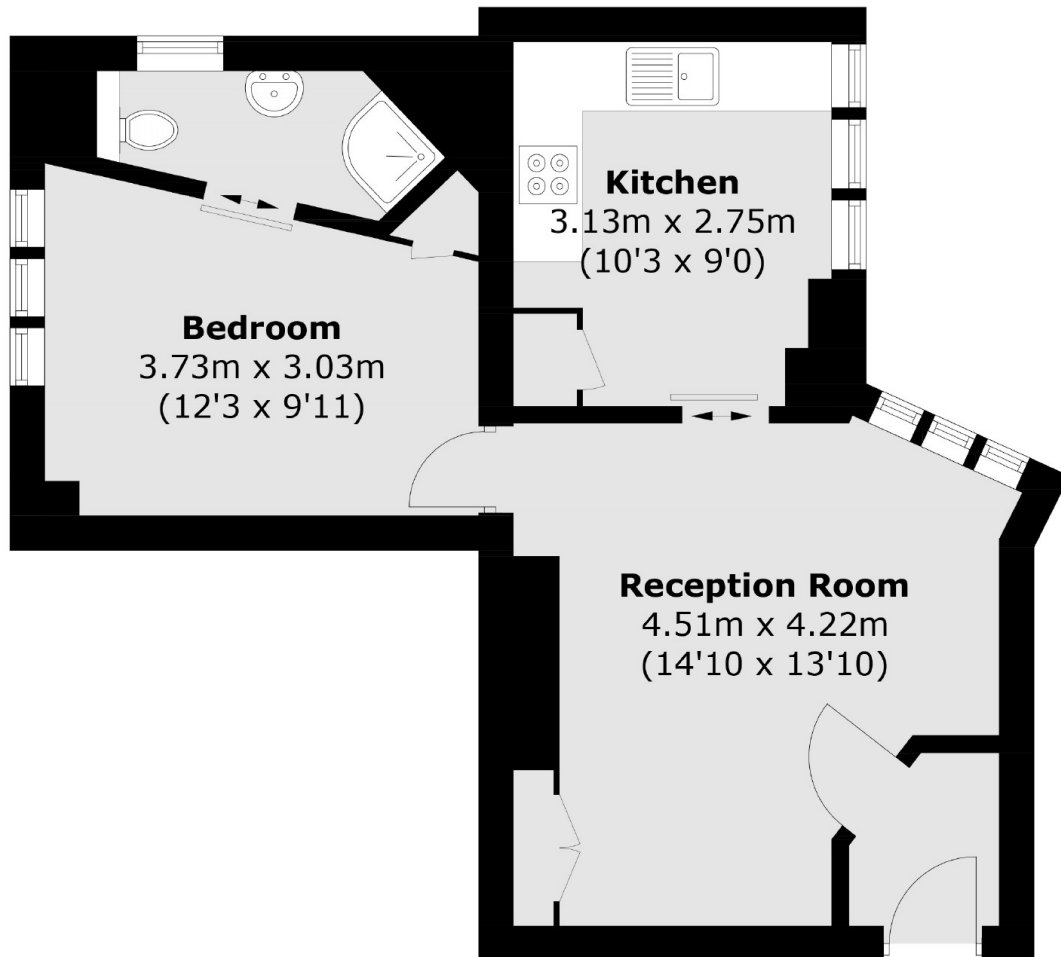
A great sized one bedroom mansion flat located to the rear of the building overlooking the private gated courtyard. There is a separate eat-in kitchen, high ceilings, excellent natural light and storage.

Dulverton Mansions is very well located on Gray's Inn Road with excellent access to Bloomsbury and Covent Garden as well as Chancery Lane, Farringdon (Overground and Elizabeth Line) and King's Cross stations.

Features

- One Double Bedroom
- Mansion Block
- Entrance Porch
- Excellent Condition
- En-Suite Shower
- Communal Garden
- Offers in Excess of £450,000

Gray's Inn Road,
London, WC1X



First Floor

Total area (approx.): 42.8 sq. m (460.7 sq. ft)

Dexters

Bloomsbury
55-56 Coram Street
London
WC1N 1HB
Sales
020 7833 4466

Energy Rating: . We aim to make our particulars both accurate and reliable. However they are not guaranteed; nor do they form part of an offer or contract. If you require clarification on any points then please contact us, especially if you're traveling some distance to view. Please note that appliances and heating systems have not been tested and therefore no warranties can be given as to their good working order.

 **RICS** | Regulated
Estate Agent
and Letting Agent

dexters.co.uk