



Endsleigh Street, WC1H

£665,000

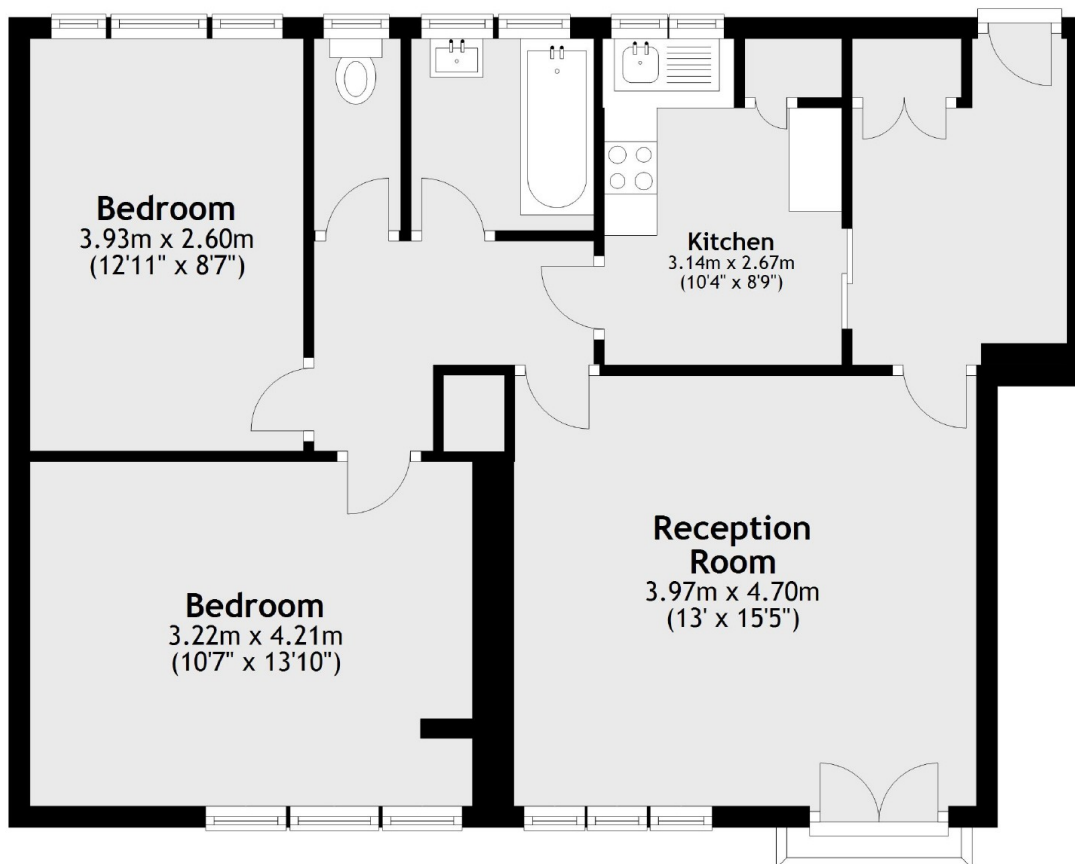
Located within a purpose built development just off Tavistock Square, the property consists of two double bedrooms, newly laid Karndean flooring, a separate kitchen, a private balcony off the living room and communal gardens to the rear.

Winston House is a purpose built block located within walking distance of Euston, King's Cross and Russell Square. Tavistock Square is next door and the Brunswick shopping centre nearby.

Features

- Two Double Bedrooms
- Private Balcony
- Communal Garden
- Separate Living Room
- Basement Storage
- 184 Year Lease

Endsleigh Street, London, WC1H



Total area: approx. 68.9 sq. metres (741.8 sq. feet)