



Gray's Inn Road, WC1X

£550,000

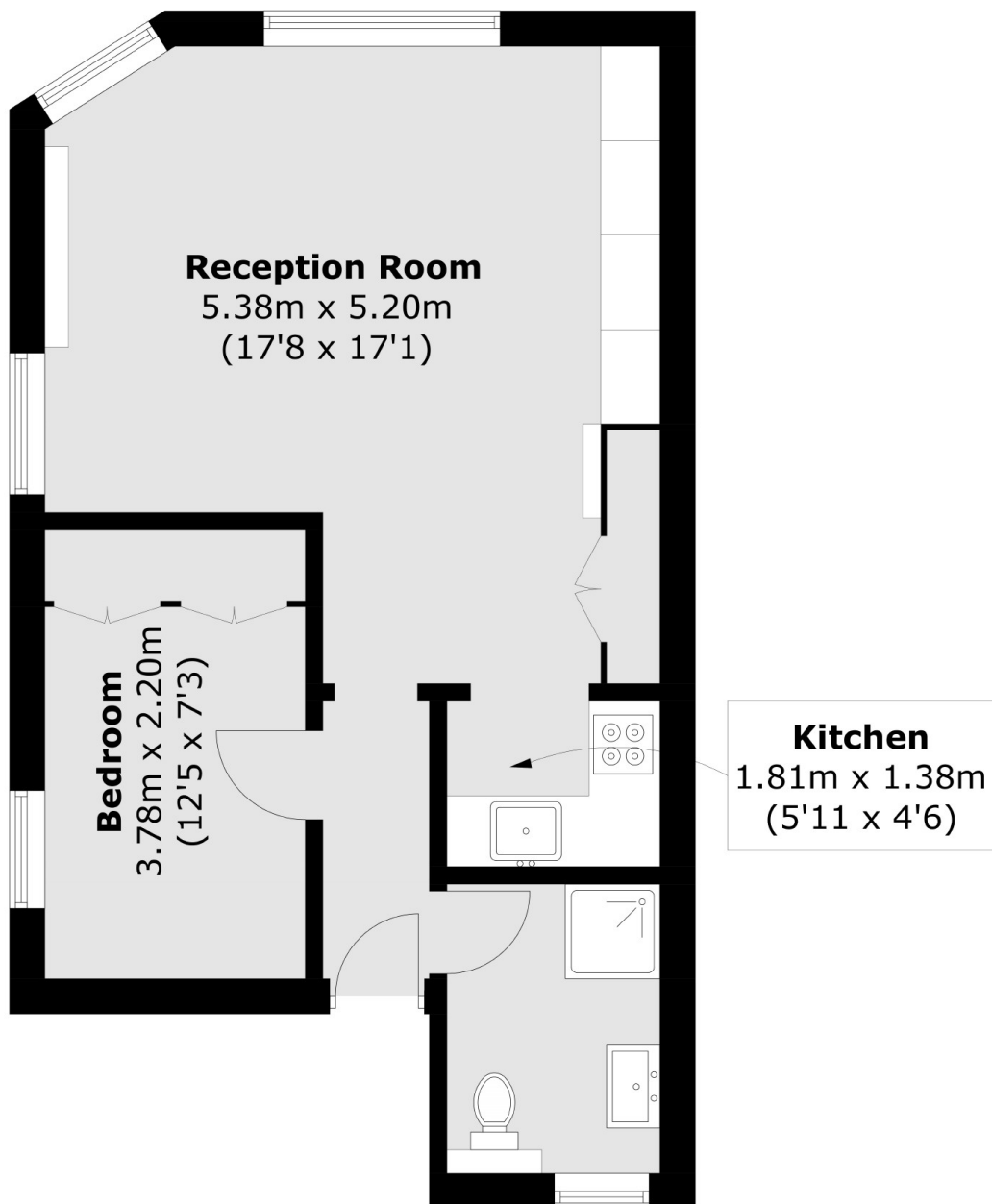
A one double bedroom Victorian conversion in WC1. The property occupies a corner position and includes a family bathroom with window, a great size lounge with three sash windows and high ceilings, a re-fitted kitchen and fitted storage throughout.

Located on the corner of Northington Street and Gray's Inn Road the property is equidistant between Chancery Lane, Russell Square station and Crossrail at Farringdon.

Features

- One Double Bedroom
- High Ceilings
- Dual Aspect
- Fitted Storage
- Victorian Conversion
- Close To Transport

Gray's Inn Road, London, WC1X



Total area (approx.): 43.8 sq. m (471.4 sq. ft)