



## Russell Square, WC1B

£800 Per week

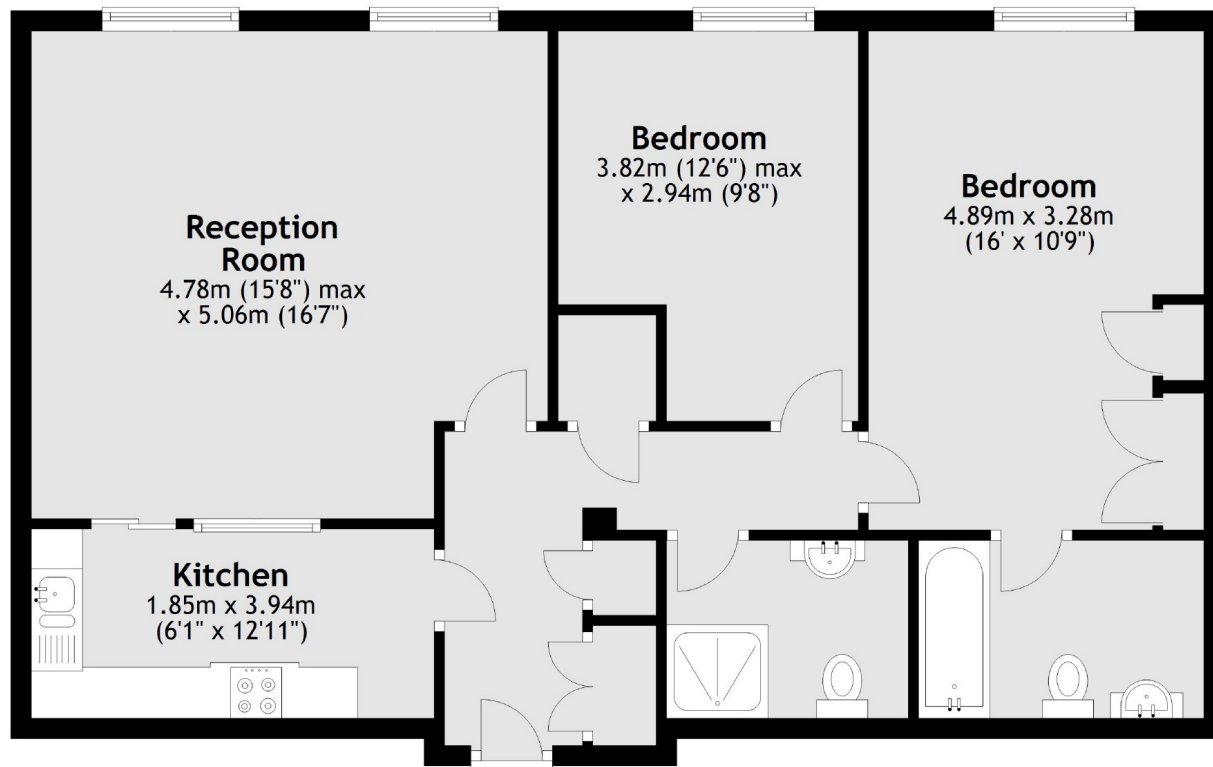
An extremely well presented, spacious two double bedroom apartment on the third floor of one of Bloomsbury's premier mansion blocks. It has two bathrooms (one ensuite), a separate kitchen and a very spacious living area. The building has a porter, gym and sauna.

Russell Square is one of the most exclusive addresses in Bloomsbury and is just a few yards from Russell square Underground station.

### Features

- Two Double Bedrooms
- Two Bathrooms
- Porter
- Gym & Sauna
- Lift
- Water Included

Russell Square,  
London, WC1B



## Fourth Floor

Total area: approx. 77.8 sq. metres (837.3 sq. feet)