



Woburn Place, WC1H

£290,000

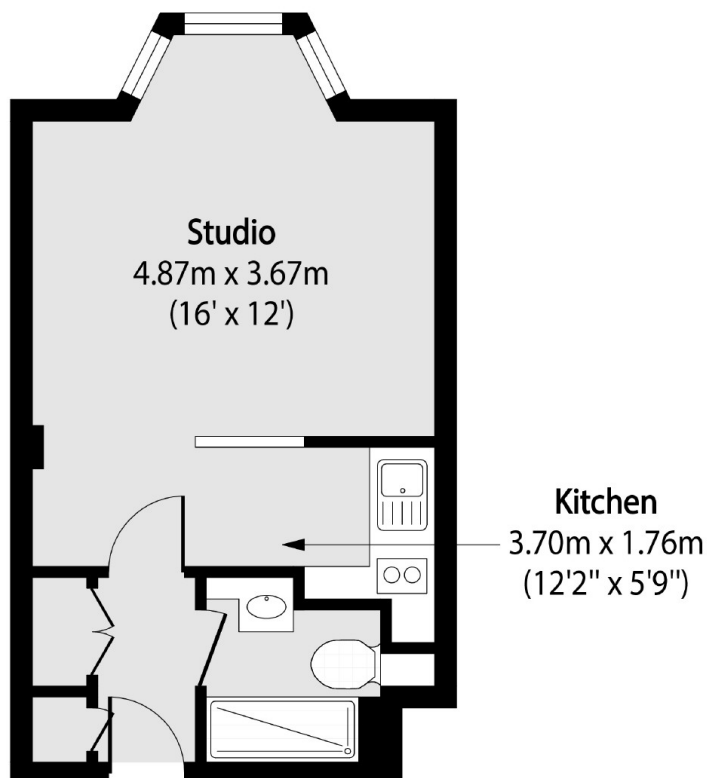
A third floor studio flat on the east elevation of this 1930s portered mansion block. The flat consists of an entrance hall with storage cupboards, bathroom, studio room with bay window and semi open-plan kitchen.

Located just moments from Russell Square tube station and the Brunswick Centre with a Waitrose supermarket and many shops and restaurants. The West End and the Eurostar terminal at St Pancras are near by.

Features

- Share Of Freehold
- Studio Apartment
- Lift Access
- 24 Hour Concierge
- Third Floor
- No Onward Chain

Woburn Place,
London, WC1H



Total area (approx): 22.56 sq m (243 sq. ft)

Dexters

Bloomsbury
55-56 Coram Street
London
WC1N 1HB
Sales
020 7833 4466

Energy Rating: C. We aim to make our particulars both accurate and reliable. However they are not guaranteed; nor do they form part of an offer or contract. If you require clarification on any points then please contact us, especially if you're traveling some distance to view. Please note that appliances and heating systems have not been tested and therefore no warranties can be given as to their good working order.

 **RICS** | Regulated
Estate Agent
and Letting Agent

dexters.co.uk