



Woburn Place, WC1H

£300,000

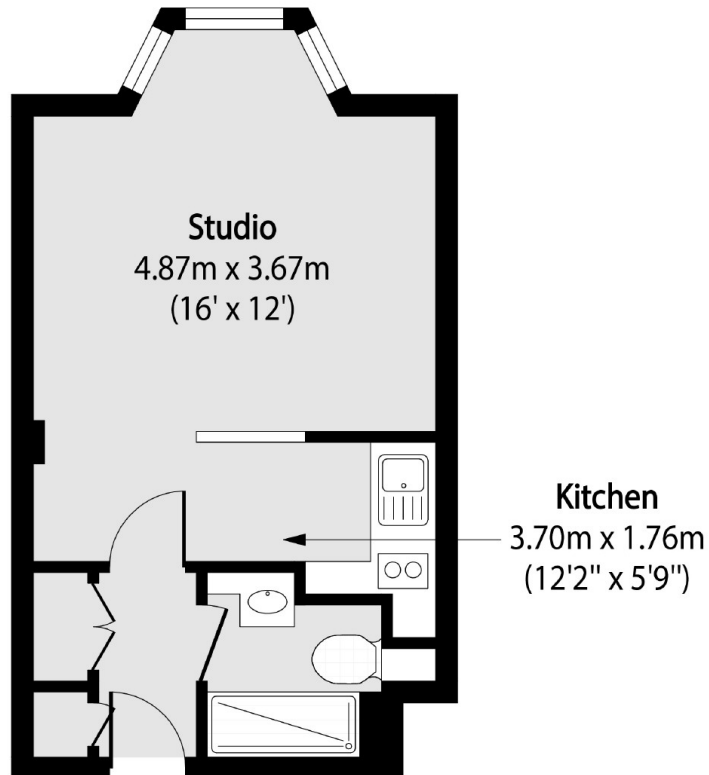
A third floor studio flat on the east elevation of this 1930s portered mansion block. The flat consists of an entrance hall with storage cupboards, bathroom, studio room with bay window and semi open-plan kitchen.

Located just moments from Russell Square tube station and the Brunswick Centre with a Waitrose supermarket and many shops and restaurants. The West End and the Eurostar terminal at St Pancras are near by.

Features

- Share Of Freehold
- Studio Apartment
- Lift Access
- 24 Hour Concierge
- Third Floor
- No Onward Chain

Woburn Place, London, WC1H



Total area (approx): 22.56 sq m (243 sq. ft)