



## Woburn Place, WC1H

£350,000

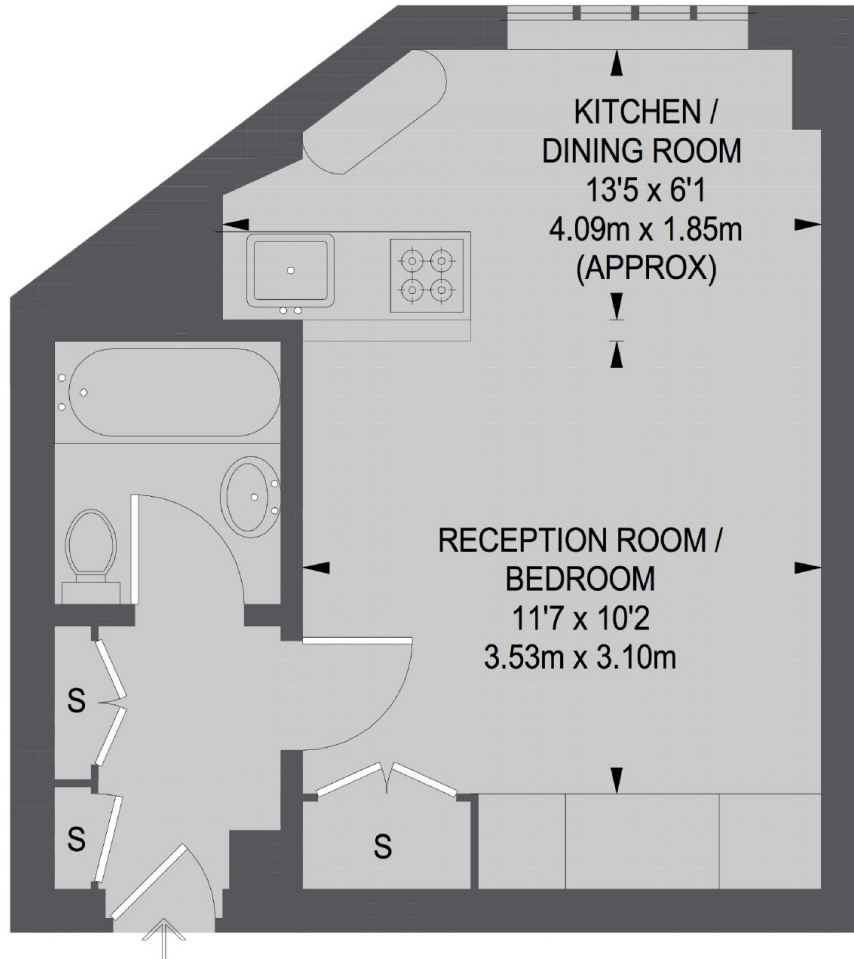
An excellent opportunity to purchase a larger than average corner flat in the ever popular Russell Court in WC1. The property is finished to an excellent standard and includes a newly fitted kitchen with washing machine, spacious living/bedroom area and fitted storage.

Located just off Russell Square there is easy access to tube stations the West End, Covent Garden and the Eurostar terminal at St Pancras. Also the Brunswick shopping centre with a Waitrose and many other shops and restaurants is just a moment away.

### Features

- Share Of Freehold
- 7th Floor
- Corner Flat
- Large Studio
- 24hr Porter
- Lift Access

Woburn Place,  
London, WC1H



**SEVENTH FLOOR**

**TOTAL APPROX. FLOOR AREA**  
**295 SQ. FT. ( 27.43 SQ. M.)**

**Dexters**

Bloomsbury  
55-56 Coram Street  
London  
WC1N 1HB  
Sales  
020 7833 4466

Energy Rating: C. We aim to make our particulars both accurate and reliable. However they are not guaranteed; nor do they form part of an offer or contract. If you require clarification on any points then please contact us, especially if you're traveling some distance to view. Please note that appliances and heating systems have not been tested and therefore no warranties can be given as to their good working order.

 **RICS** | Regulated  
Estate Agent  
and Letting Agent

[dexters.co.uk](http://dexters.co.uk)