



Red Lion Street, WC1R

£600,000

A beautifully presented one double bedroom home within a small private development. There is a large open-plan reception/living room with lots of natural light as well as a double bedroom with fitted wardrobes.

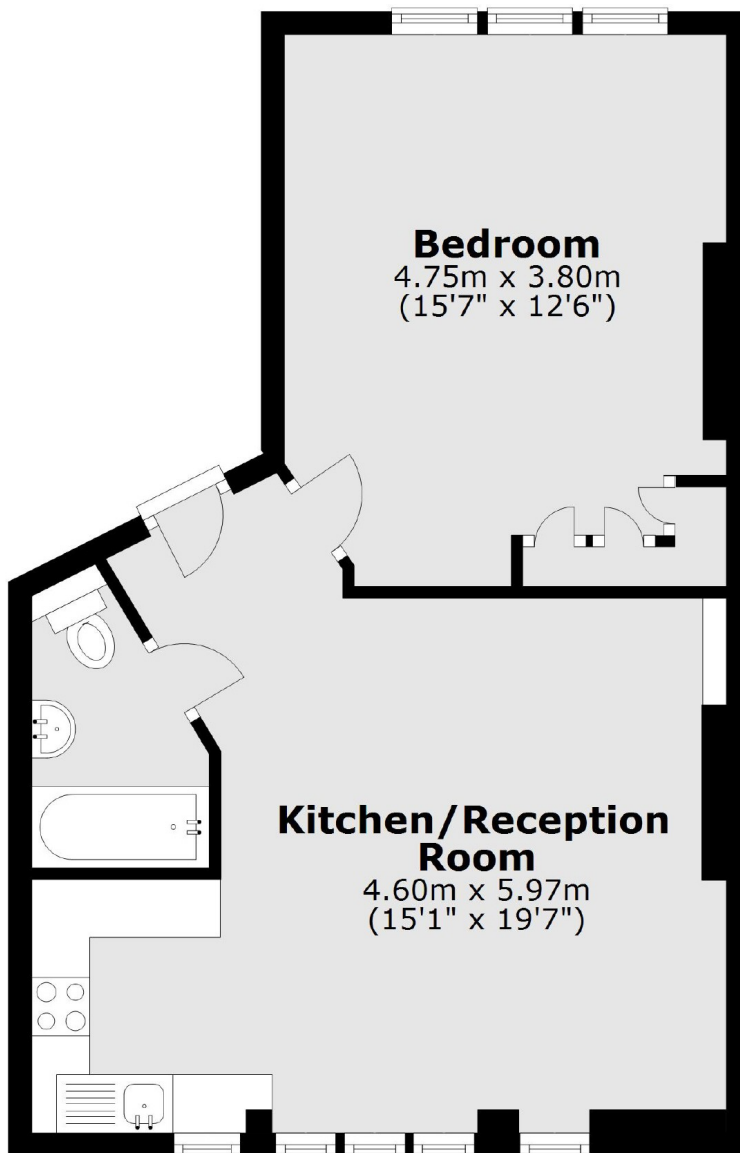
Red Lion Street is partly pedestrianised and close by the well renowned Lamb's Conduit Street, Holborn Station and a vast array of eateries and shopping facilities within neighbouring Covent Garden.

Features

- One Double Bedroom
- Open Plan Kitchen/Living Room
- Excellent Location
- Close To Transport
- Long Lease
- No Onward Chain

Red Lion Street,
London, WC1R

Third Floor



Total area: approx. 47.1 sq. metres (507.5 sq. feet)