



Thanet Street, WC1H

£600 Per week

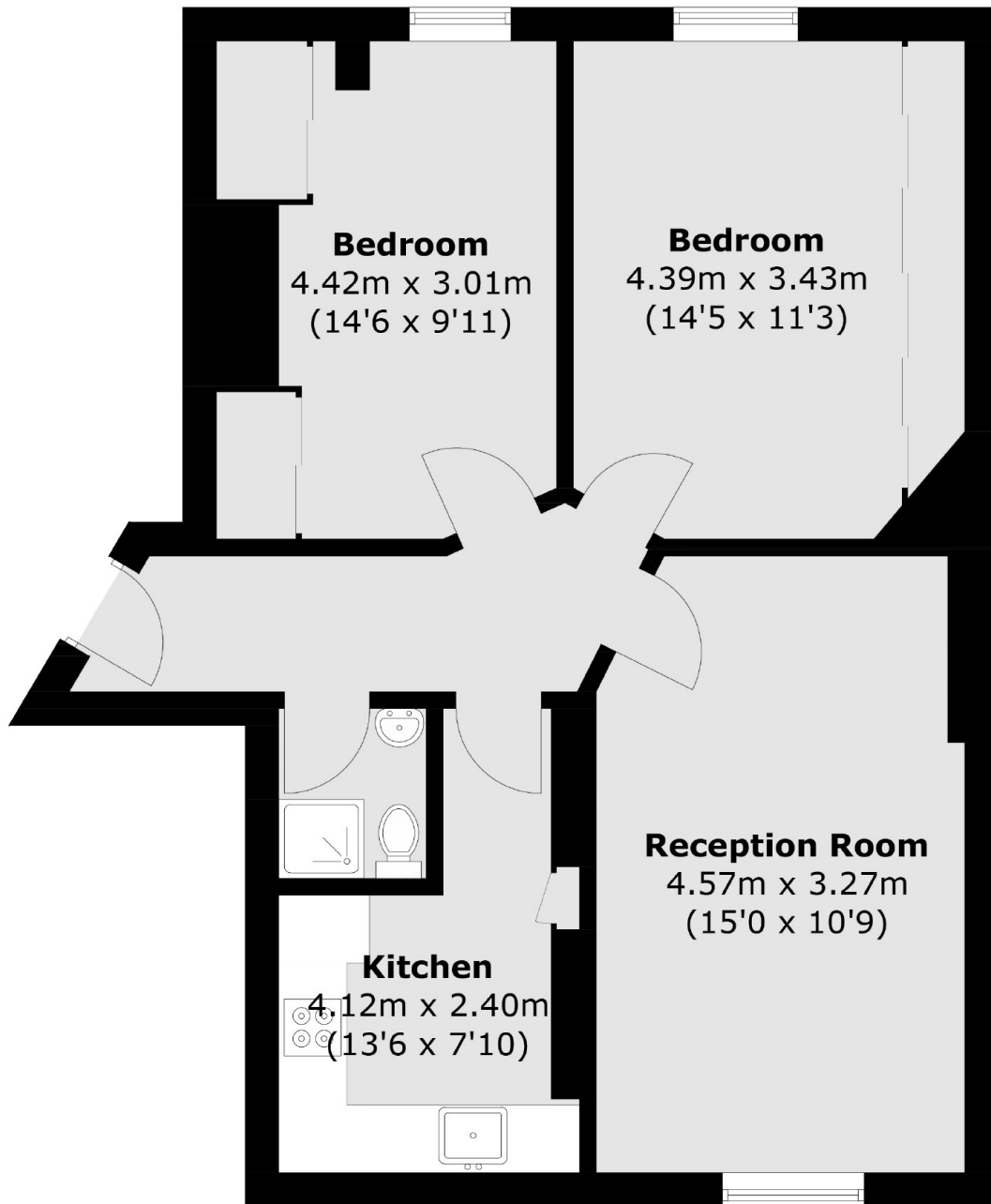
A well presented, two bedroom apartment on the top floor of this popular mansion block in Bloomsbury. The apartment has a bright and spacious reception, two equally sized bedrooms, separate kitchen and contemporary bathroom. Furnished with wood floors throughout.

Thanet House is located on Thanet Street and provides excellent access to Bloomsbury, the West End and King's Cross St Pancras. It is very well located for easy access to the Brunswick Centre, UCL and SOAS.

Features

- Two Double Bedrooms
- Fifth Floor
- Separate Kitchen
- Wood Flooring Throughout
- Communal Roof Garden
- Great Location

Thanet Street,
London, WC1H



Total area (approx.): 64.9 sq. m (698.5 sq. ft)