



Gray's Inn Road, WC1X

£380 Per week

A brand newly refurbished studio apartment with a separate kitchen on the first floor. The apartment has a very modern kitchen and bathroom, with the addition of a balcony.

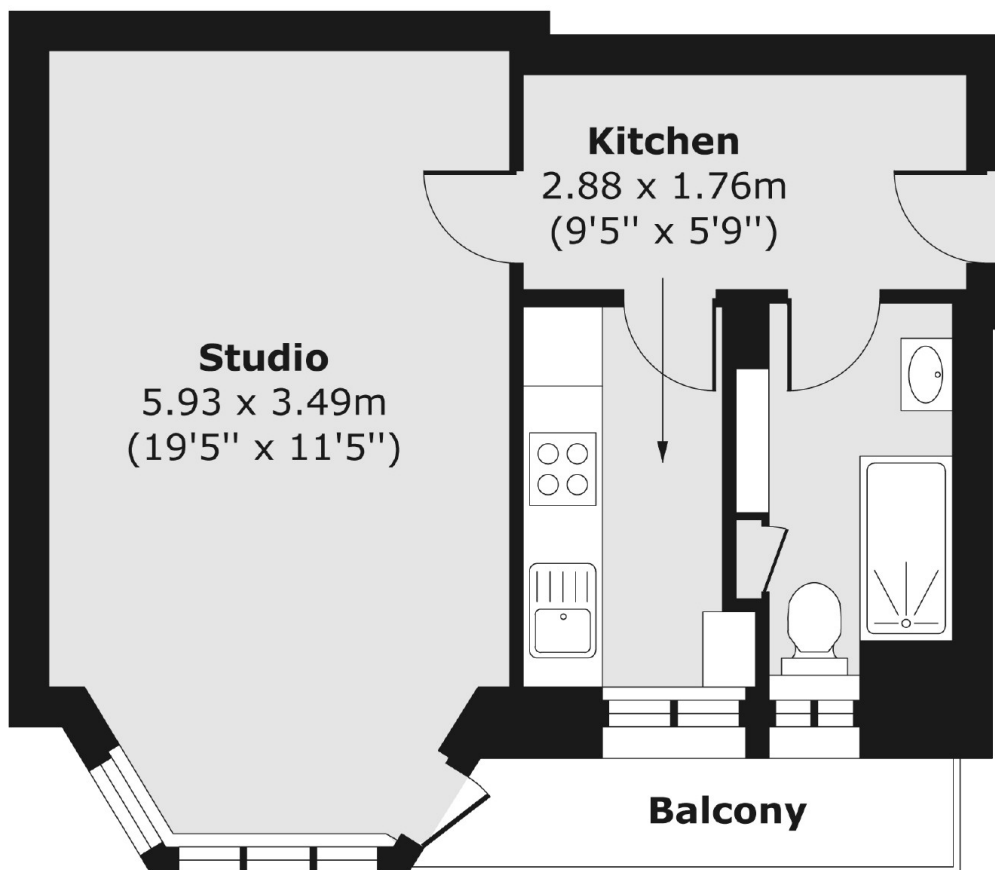
Trinity Court is well located for Bloomsbury (Russell Square and Kings Cross). The area is equally popular with corporate/professional tenants and academics studying at the nearby Universities such as UCL and LSE.

Features

- Modern
- First Floor With Lift
- Brand Newly Refurbished
- Private Balcony
- Available Now
- Live in Caretaker

Gray's Inn Road, London, WC1X

First Floor



Total area (approx.) 35.03 sq. m (377 sq. ft)
Balcony area (approx.) 3.16 sq. m (34 sq. ft)