



Cubitt Street, WC1X

£692 Per week

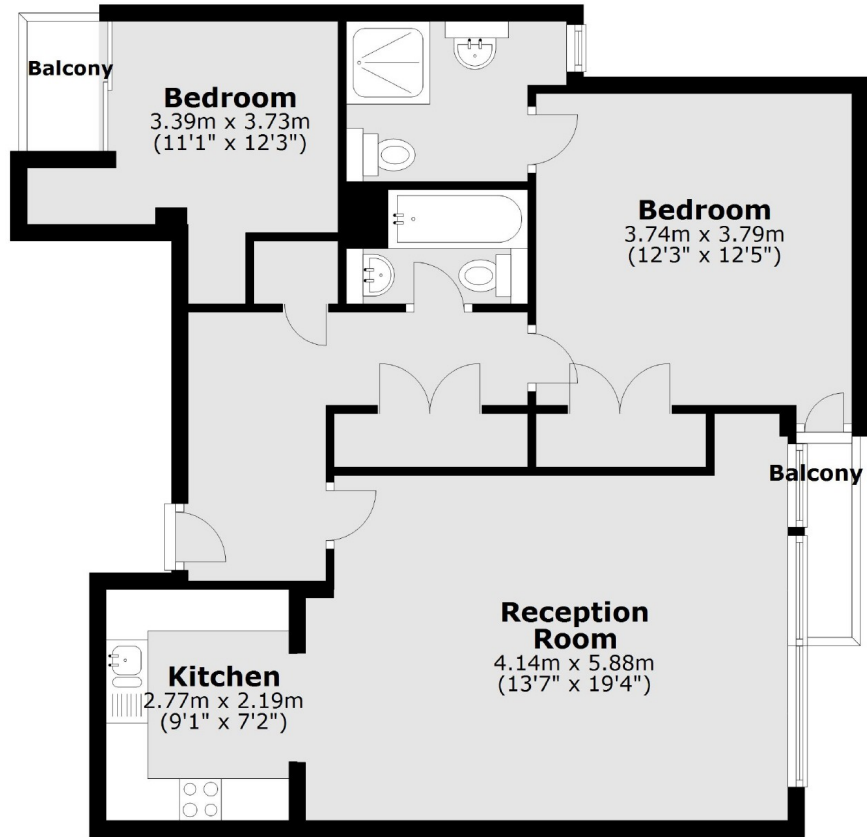
This beautiful, two bedroom, two bathroom apartment is located on the 4th floor of a modern development located in Bloomsbury. The property also benefits from a balcony located off of the reception room.

Transport facilities are located at Kings Cross, Russell Square & Angel. Shopping amenities are situated at The Brunswick Centre.

Features

- Outside Space
- Two Bathrooms
- Fantastic Location
- Spacious Reception Room
- Modern Kitchen
- Double Bedrooms

Cubitt Street,
London, WC1X



Main area: Approx. 75.2 sq. metres (808.9 sq. feet)
Plus balconies, approx. 3.3 sq. metres (35.4 sq. feet)