

## Queen Square, WC1N

£700,000

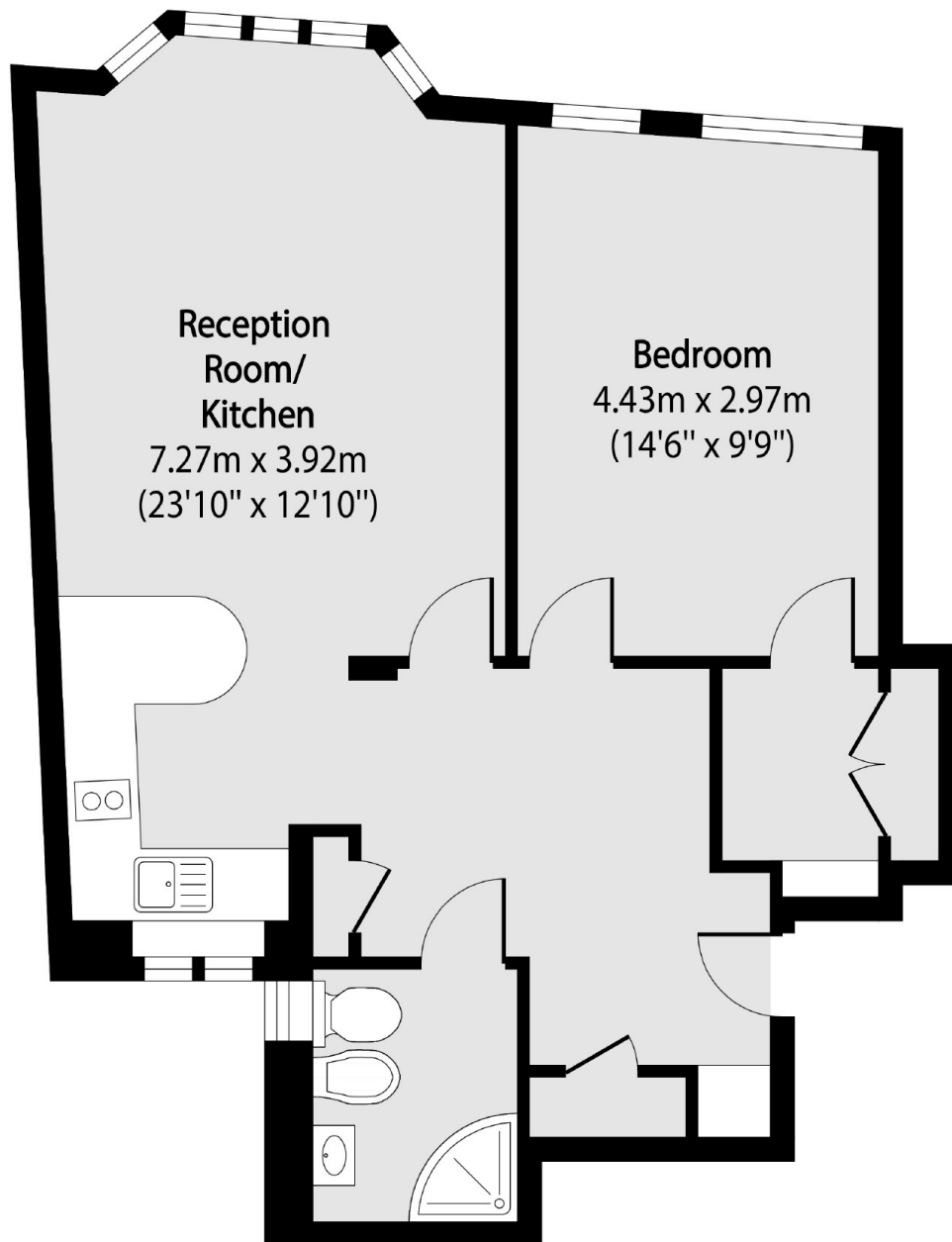
This spacious one-bedroom apartment is situated on the third floor of a beautifully maintained 1930s Art Deco mansion block. Covering nearly 600 sq ft, the property includes a generous entrance hall leading to a bright, open-plan kitchen and reception area, complete with a charming bay window offering picturesque views of a leafy square. The double bedroom is well-proportioned, and the home also features a convenient utility room and a stylish family bathroom. The building has recently undergone an extensive refurbishment, including a new roof, new windows, and re-pointed brickwork. Heating and hot water are included in the service charge, providing added comfort and convenience.

Queen Court enjoys an enviable position overlooking the picturesque 18th-century Queen Square, nestled between the vibrant neighbourhoods of Bloomsbury and Holborn. The area offers a fantastic selection of local amenities, including the bustling Brunswick Centre and the charming boutiques, cafes, and restaurants of Lamb's Conduit Street. Exceptional transport links are within easy reach, with Russell Square and Holborn stations nearby, providing swift access across London. For international travel, the Eurostar terminal at St. Pancras International is just 15 minutes away.

### Features

- Original Wooden Flooring
- Excellent Light
- Overlooking Queen Square
- English Heritage Blue Plaque
- Day Porter
- Lift Access

Queen Square,  
London, WC1N



Total area (approx): 55.35 sq m (596 sq. ft)

**Dexters**

Bloomsbury  
55-56 Coram Street  
London  
WC1N 1HB  
Sales  
020 7833 4466

Energy Rating: C. We aim to make our particulars both accurate and reliable. However they are not guaranteed; nor do they form part of an offer or contract. If you require clarification on any points then please contact us, especially if you're traveling some distance to view. Please note that appliances and heating systems have not been tested and therefore no warranties can be given as to their good working order.

 **RICS** | Regulated  
Estate Agent  
and Letting Agent

[dexters.co.uk](http://dexters.co.uk)