



## Queen Square, WC1N

£750,000

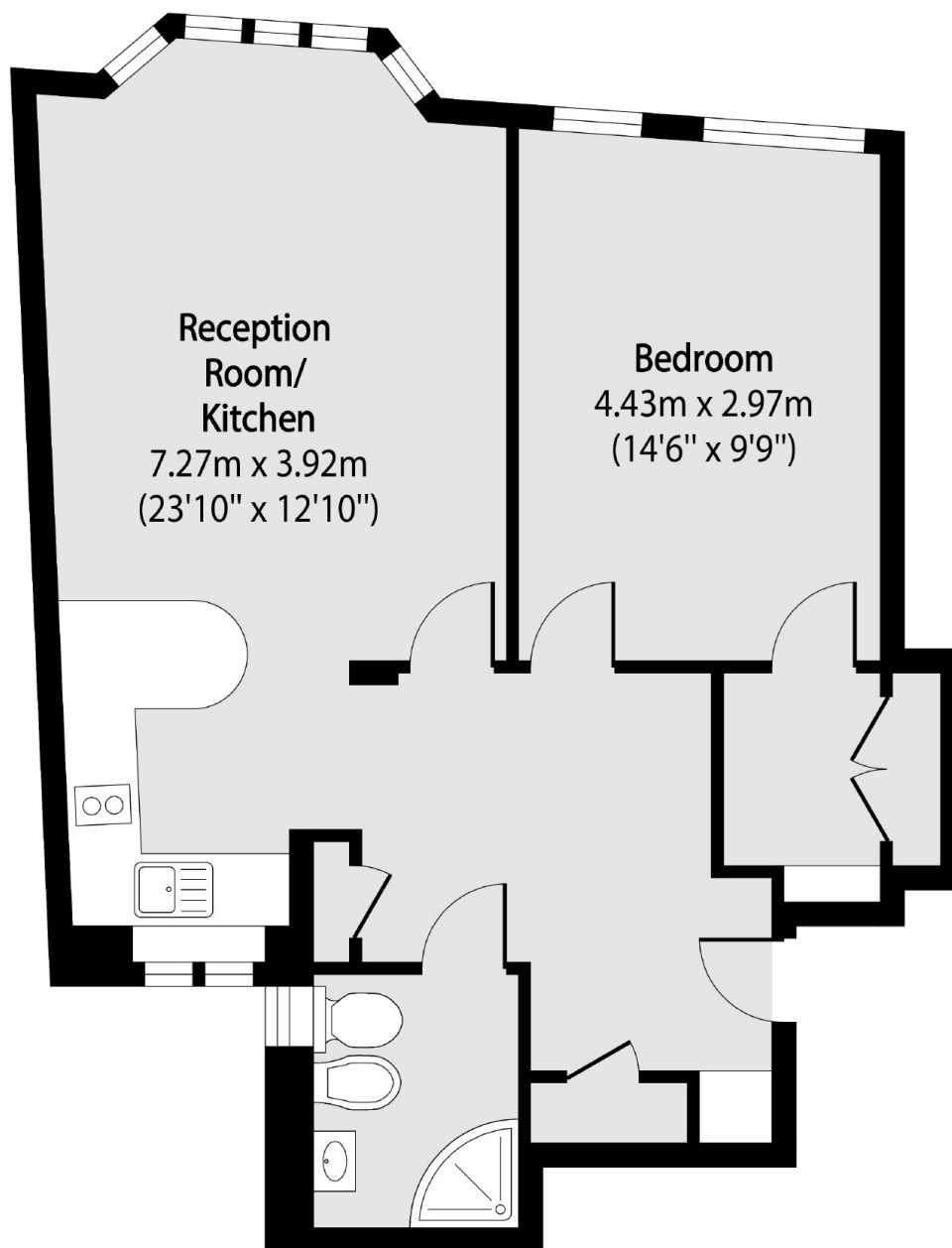
A spacious, one double bedroom home located on the 3rd floor of a well-appointed 1930's Art Deco mansion block. The property spans nearly 600 sq ft and includes an impressive entrance hall, an open-plan kitchen/reception with a bay window overlooking a leafy square, a double bedroom, utility room and family bathroom. Potential to convert to a two bedroom.

Queen Court overlooks the charming 18th century Queen Square and lies between Bloomsbury and Holborn. Nearby amenities include the ever-popular Brunswick Centre and Lamb's Conduit Street as well as excellent transport at Russell Square and Holborn with Eurostar 15 minutes away.

### Features

- Original Wooden Flooring
- Excellent Light
- Overlooking Queen Square
- English Heritage Blue Plaque
- Day Porter
- Lift Access

# Queen Square, London, WC1N



Total area (approx): 55.35 sq m (596 sq. ft)