



Harrison Street, WC1H

£500 Per week

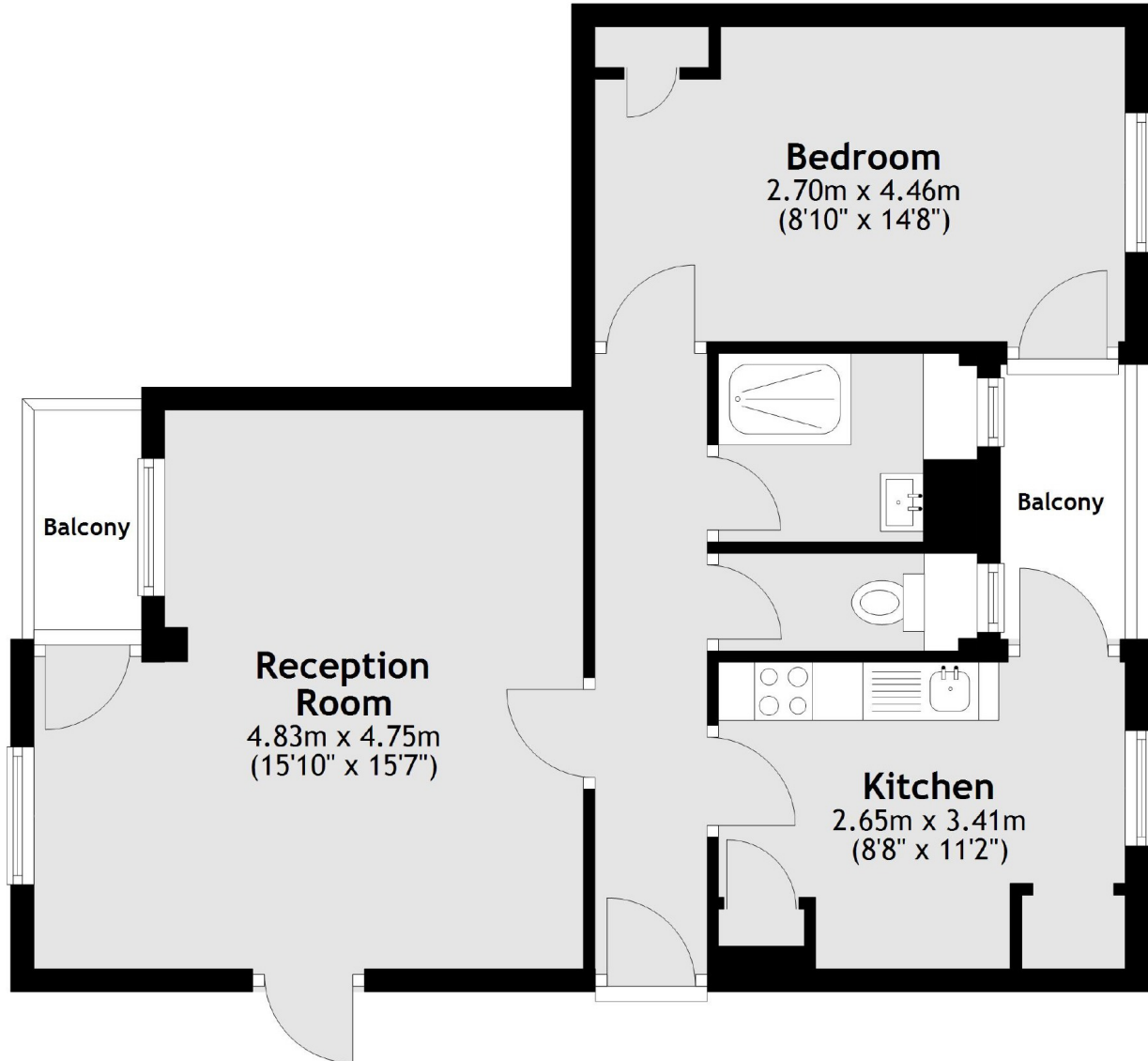
A well presented, two bedroom flat with a separate kitchen on the seventh floor of this purpose built block. The flat has two balconies and a spacious, eat-in kitchen.

Glynde Reach is situated on the corner of Cromer Street and Judd Street a short walk from Russell Square, Brunswick Centre and UCL. It is a purpose built building with lifts to each floor. Kings Cross and Euston are also within a 5 minute walk.

Features

- Great Location
- Two Balconies
- Double Bedrooms
- Lift Access
- Refurbished Bathroom
- Eat-in Kitchen

Harrison Street,
London, WC1H



Main area: Approx. 54.6 sq. metres (588.2 sq. feet)
Plus balconies, approx. 5.2 sq. metres (55.7 sq. feet)

Dexters

Bloomsbury
55-56 Coram Street
London
WC1N 1HB
Lettings
020 7833 4488

Energy Rating: . We aim to make our particulars both accurate and reliable. However they are not guaranteed; nor do they form part of an offer or contract. If you require clarification on any points then please contact us, especially if you're traveling some distance to view. Please note that appliances and heating systems have not been tested and therefore no warranties can be given as to their good working order.

 **RICS** Regulated
Estate Agent
and Letting Agent

dexters.co.uk