



## Calthorpe Street, WC1X

### £900,000

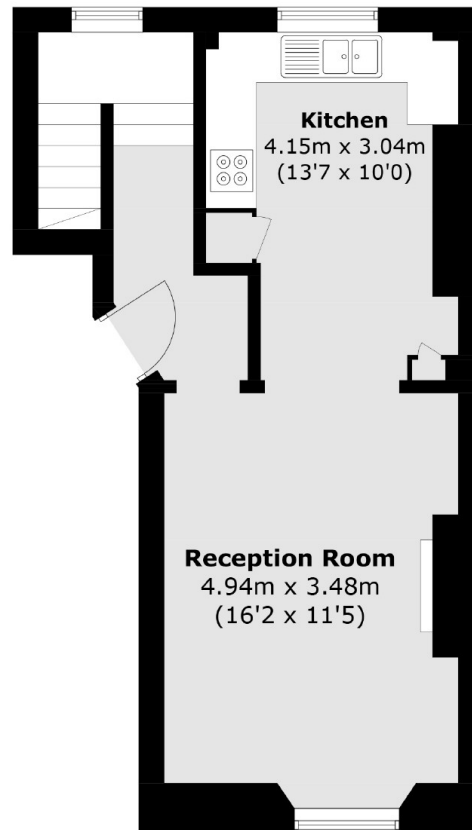
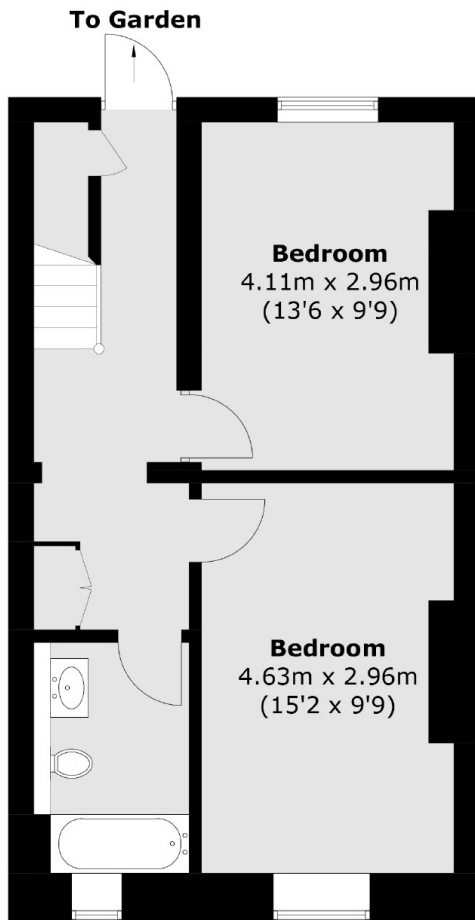
A beautifully appointed, two double bedroom home set within a grand Georgian conversion. The property is arranged over two floors and includes a re-fitted eat-in kitchen, a separate living room with feature fireplace, original shutters and solid wood flooring. There are two double bedrooms, a re-fitted bathroom and access to the private patio on the lower floor.

Located a short walk away from both Farringdon and Russell Square tube stations as well as the Brunswick Shopping Centre making the flat ideal for those who want to be centrally located with plenty of shops, bars, restaurants and transport on their doorstep.

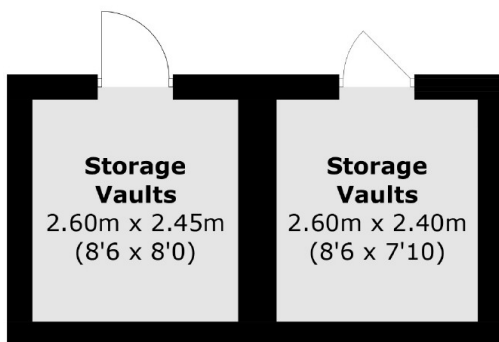
### Features

- Two Double Bedrooms
- Excellent Condition
- High Ceilings
- Split Level
- Private Patio
- Period Features

# Calthorpe Street, London, WC1X



**Ground Floor**



**Lower Ground Floor**

Total area (approx.): 81.1 sq. m (872.9 sq. ft)  
Storage Vaults (approx.): 14.3 sq. m (153.9 sq. ft)