



## Great Turnstile, WC1V

£800,000

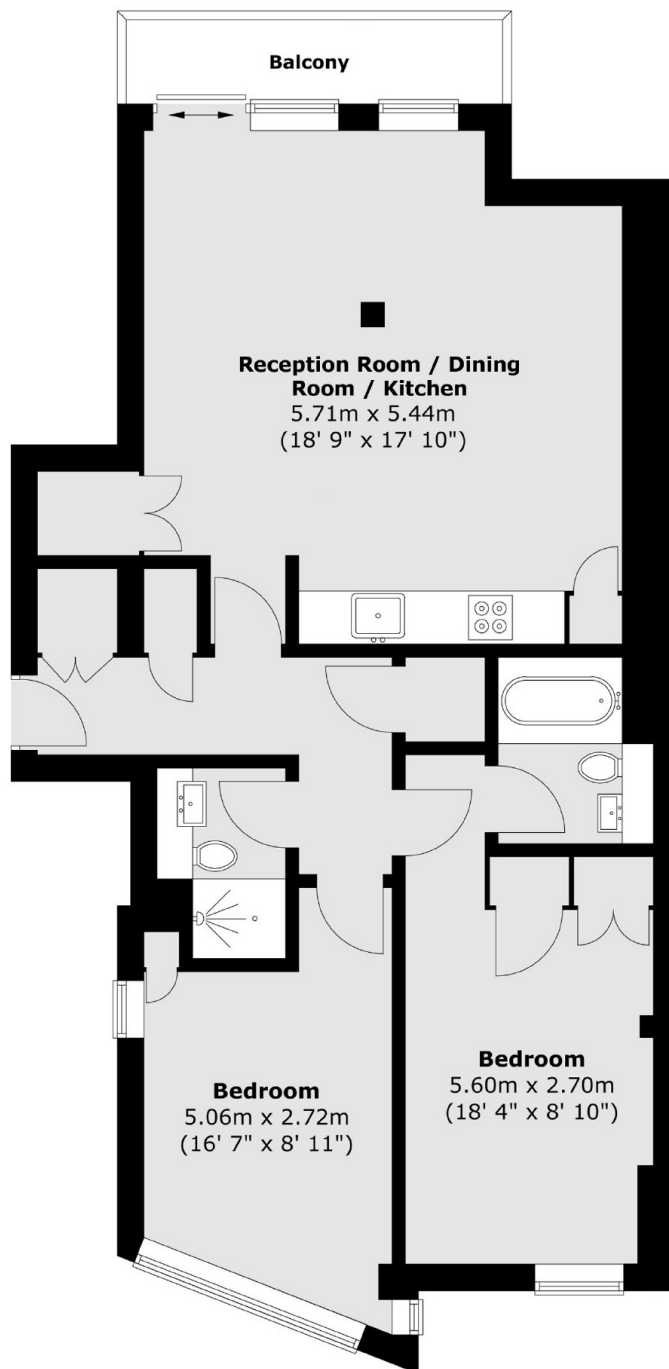
A two double bedroom, two bathroom property located on the third floor with lift access and private balcony. The accommodation spans over 800 sq ft and includes an open plan kitchen, fitted wardrobes and secure underground storage.

Great Turnstile House is a secured development situated between Lincoln's Inn Fields and Red Lion Square, the nearest stations are Holborn and Chancery Lane underground.

### Features

- Two Double Bedrooms
- Two Bathrooms
- Balcony
- Lift
- Storage Unit
- Over 900 Years Lease

# Great Turnstile, London, WC1V



Total area (approx.) : 74.8 sq. m (805 sq. ft)  
Total balcony area (approx.) : 3.7 sq. m (40 sq. ft)

**Dexters**

Bloomsbury  
55-56 Coram Street  
London  
WC1N 1HB  
Sales  
020 7833 4466

Energy Rating: B. We aim to make our particulars both accurate and reliable. However they are not guaranteed; nor do they form part of an offer or contract. If you require clarification on any points then please contact us, especially if you're traveling some distance to view. Please note that appliances and heating systems have not been tested and therefore no warranties can be given as to their good working order.

 **RICS** | Regulated  
Estate Agent  
and Letting Agent

[dexters.co.uk](http://dexters.co.uk)