



## Coram Street, WC1N

£1,200,000

Witley Court is a very well managed, 1930's mansion building set within the heart of Bloomsbury. The property is in excess of 1200 sq ft and incorporates four double bedrooms, a separate kitchen, living room, family bathroom and separate WC.

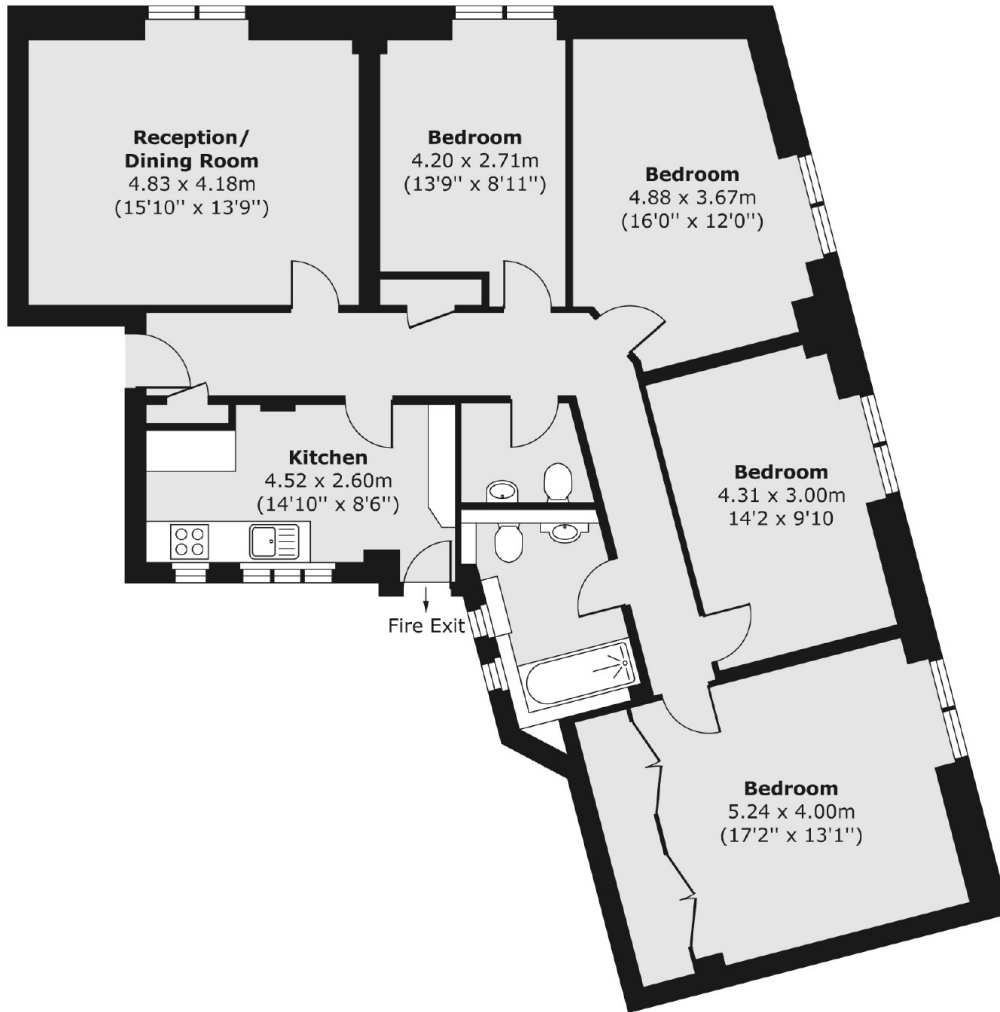
The flat is just moments from Russell Square tube station and the Brunswick shopping centre which is home to an array of shops and restaurants including a large Waitrose supermarket. London's best Universities are also nearby.

### Features

- Seventh Floor
- Lift Access
- Over 1200 Sq Ft
- Day Porter
- Excellent Location
- No Onward Chain

Coram Street,  
London, WC1N

Seventh Floor



Total area (approx.) 114.38 sq. m (1,231 sq. ft)