



Guilford Street, WC1N

£550,000

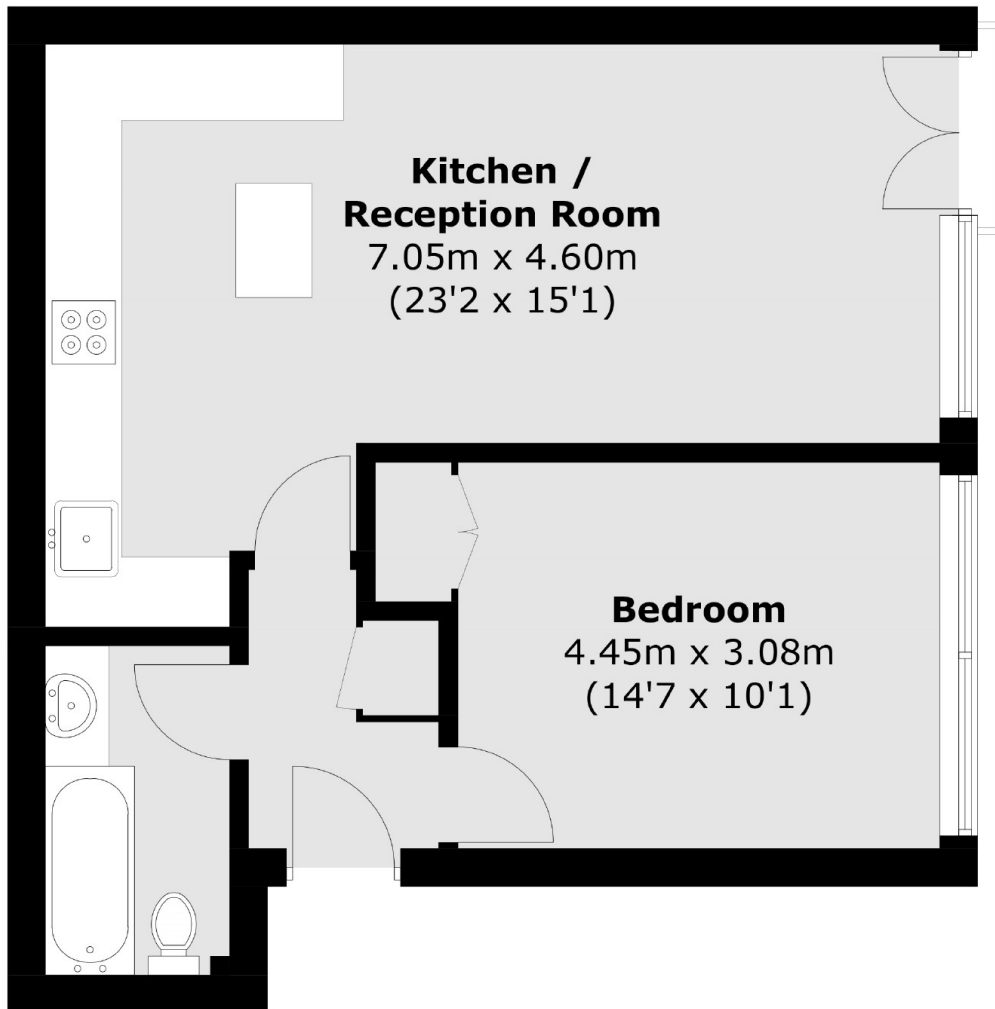
Located on the third floor, this one double bedroom apartment has not been on the market for 40 years. Spanning 500 Sq Ft the property has excellent natural light and a share of the freehold. There is a double bedroom with fitted wardrobes, a family bathroom and an open-plan reception/kitchen with a central island and Juliette balcony.

Guilford Court is a purpose built private block in the heart of Bloomsbury just 300m from Russell Square underground. There are numerous public squares nearby as well as London's top universities.

Features

- One Double Bedroom
- Large Kitchen/Reception
- Juliette Balcony
- Excellent Location
- Close To Underground
- No Onward Chain

Guilford Street,
London, WC1N



Total area (approx.): 46.5 sq. m (500.5 sq. ft)

Dexters

Bloomsbury
55-56 Coram Street
London
WC1N 1HB
Sales
020 7833 4466

Energy Rating: C. We aim to make our particulars both accurate and reliable. However they are not guaranteed; nor do they form part of an offer or contract. If you require clarification on any points then please contact us, especially if you're traveling some distance to view. Please note that appliances and heating systems have not been tested and therefore no warranties can be given as to their good working order.

 **RICS** | Regulated
Estate Agent
and Letting Agent

dexters.co.uk