



Brunswick Centre, WC1N

£535,000

A rarely available one bedroom property within The Brunswick Centre. There is a semi-open plan living room and kitchen, double bedroom, a family bathroom, fitted storage and a private balcony.

Founding Court is well positioned within the Brunswick Centre offering endless shops and access to fantastic transport links, London's universities and marvellous green spaces.

Features

Offers in Excess of £535,000
Private Balcony
One Double Bedroom
Lift Access
Excellent Condition
49 Year Lease

Brunswick Centre, London, WC1N

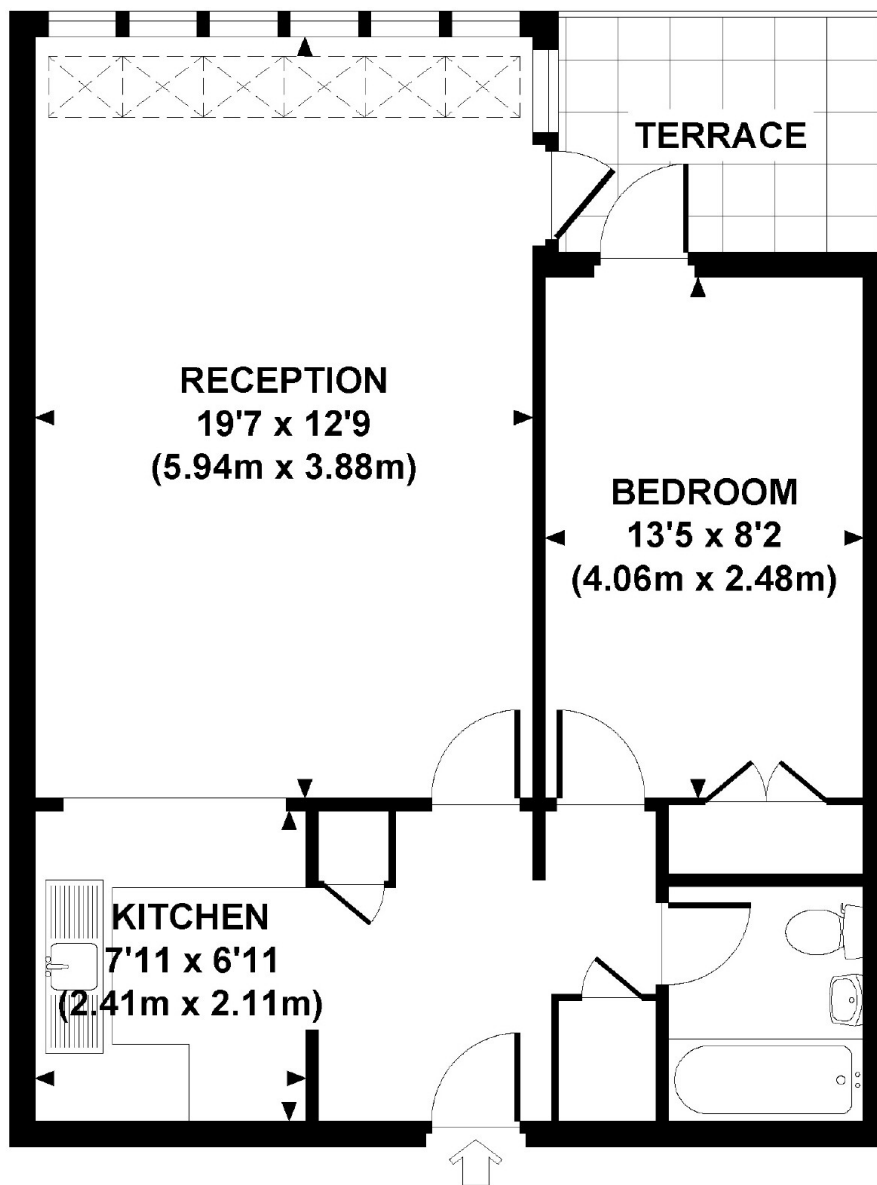
FOUNDLING COURT, BRUNSWICK CENTRE, WC1N

Approx. gross internal area

536 Sq Ft / 49.8 Sq M.

Representation of current layout

Not to scale.



FIRST FLOOR

Dexters

Bloomsbury
55-56 Coram Street
London
WC1N 1HB
Sales
020 7833 4466

Energy Rating: C. We aim to make our particulars both accurate and reliable. However they are not guaranteed; nor do they form part of an offer or contract. If you require clarification on any points then please contact us, especially if you're traveling some distance to view. Please note that appliances and heating systems have not been tested and therefore no warranties can be given as to their good working order.

 **RICS** | Regulated
Estate Agent
and Letting Agent

dexters.co.uk