



King's Mews, WC1N

£1,250,000

This recently refurbished mews style apartment showcases a sophisticated contemporary design. The property includes an impressive designed reception room, an integrated separate kitchen, two generously proportioned double bedrooms - one featuring an en-suite - and a tastefully appointed family bathroom.

Additionally, the residence has a private terrace that extends seamlessly from the reception room, contributing to an open and expansive feel within the living spaces. Noteworthy is the split-level configuration, elevating the property to a duplex status.

Situated in one of the most fashionable residential areas

Features

- Two Double Bedrooms
- Two Bathrooms
- Private Terrace
- Split Level
- No Onward Chain
- Share Of Freehold



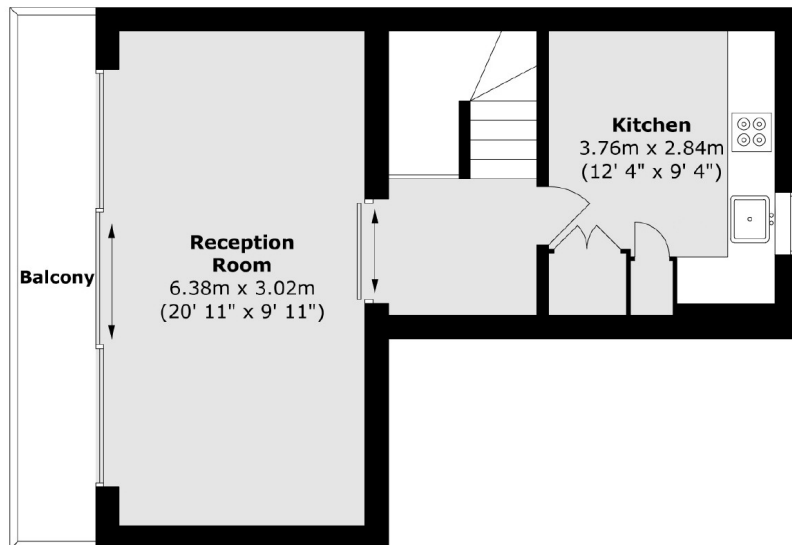
King's Mews, WC1N

Situated in one of the most fashionable residential areas in central London the property is minutes from quiet garden squares and the vibrant independent boutique shops, bars and restaurants on Lambs Conduit Street.

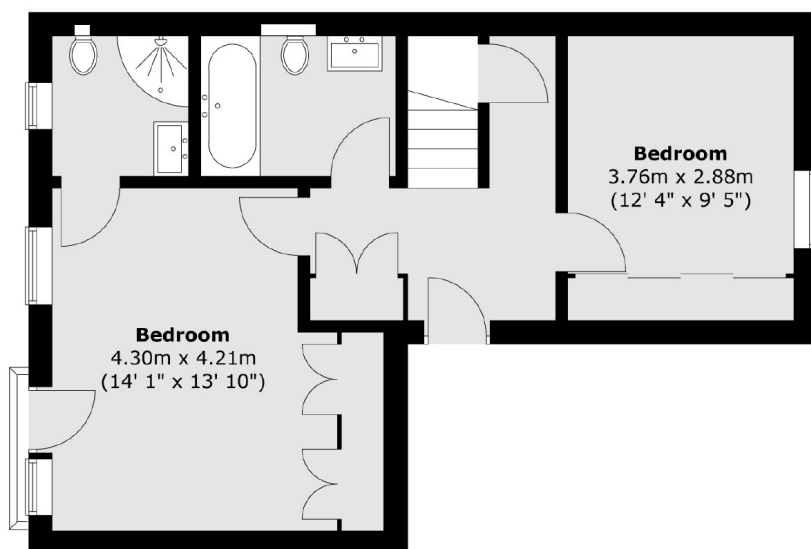


King's Mews, London, WC1N

Second Floor



First Floor



Total area (approx.) : 84.7 sq. m (912 sq. ft)
Total balcony area (approx.) : 8.4 sq. m (90 sq. ft)