

Tavistock Place, WC1H

£600,000

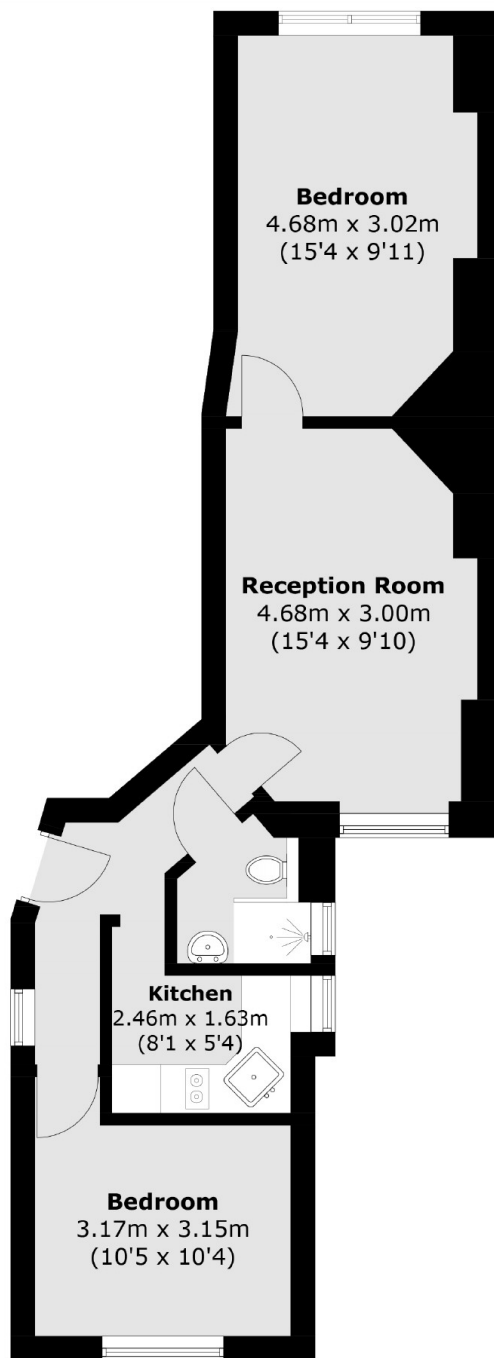
Located on the fourth floor with lift access this two double bedroom home is in excellent condition throughout and is offered with no onward chain. There is a long lease, low service charge, a separate kitchen and no onward chain.

Knolly's House is on Tavistock Place in central Bloomsbury and provides excellent access to transport, the West End and King's Cross St Pancras.

Features

- Two Double Bedrooms
- Separate Kitchen
- Long Lease
- Period Features
- Low Service Charges
- No Onward Chain

Tavistock Place, London, WC1H



Fourth Floor

Total area (approx.): 50.5 sq. m (543.6 sq. ft)