

## Sandland Street, WC1R

£1,200,000

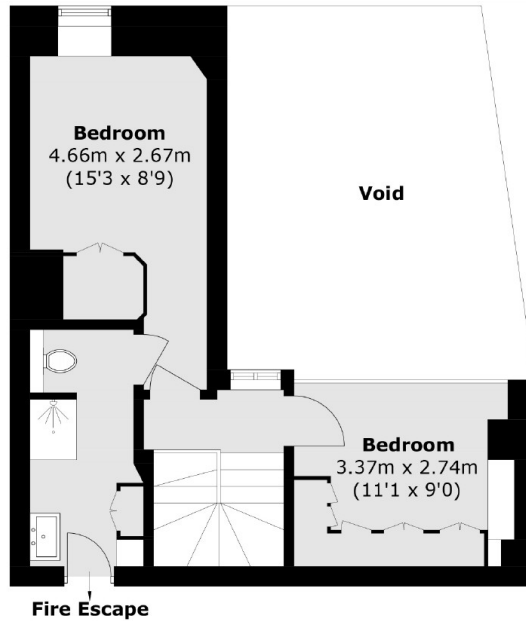
A beautifully presented split level home with a vaulted ceiling and private outdoor space. There are two double bedrooms, an en-suite and two reception rooms. The property has recently been renovated to a high standard and is a must see.

Three Cups Yard is a gated development situated between Gray's Inn and Red Lion Square, the nearest stations are Holborn and Chancery Lane underground.

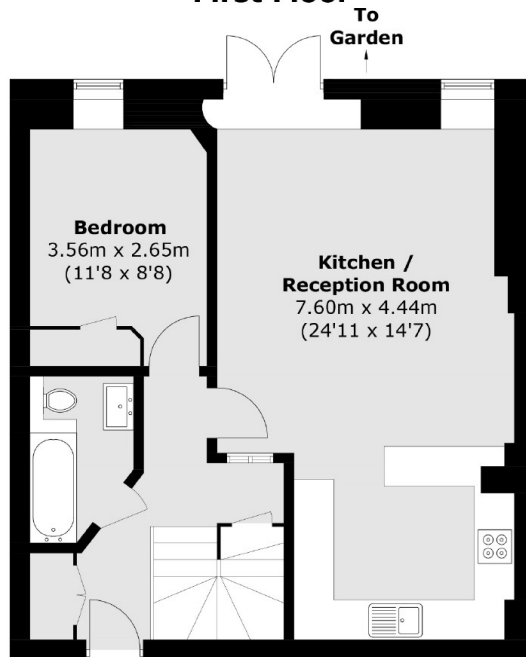
### Features

- Private Gated Development
- Over 900 Year Lease
- Private Patio Garden
- Two Double Bedrooms
- Two Bathrooms
- Immaculate Condition

# Sandland Street, London, WC1R



## First Floor



## Ground Floor

Total area (approx.): 90.3 sq. m (971.9 sq. ft)