



## Newton Street, WC2B

£950,000

A two double bedroom, two bathroom property located on the second floor with lift access and concierge. The accommodation spans over 1100 sq ft and includes a separate kitchen, fitted wardrobes and secure underground parking.

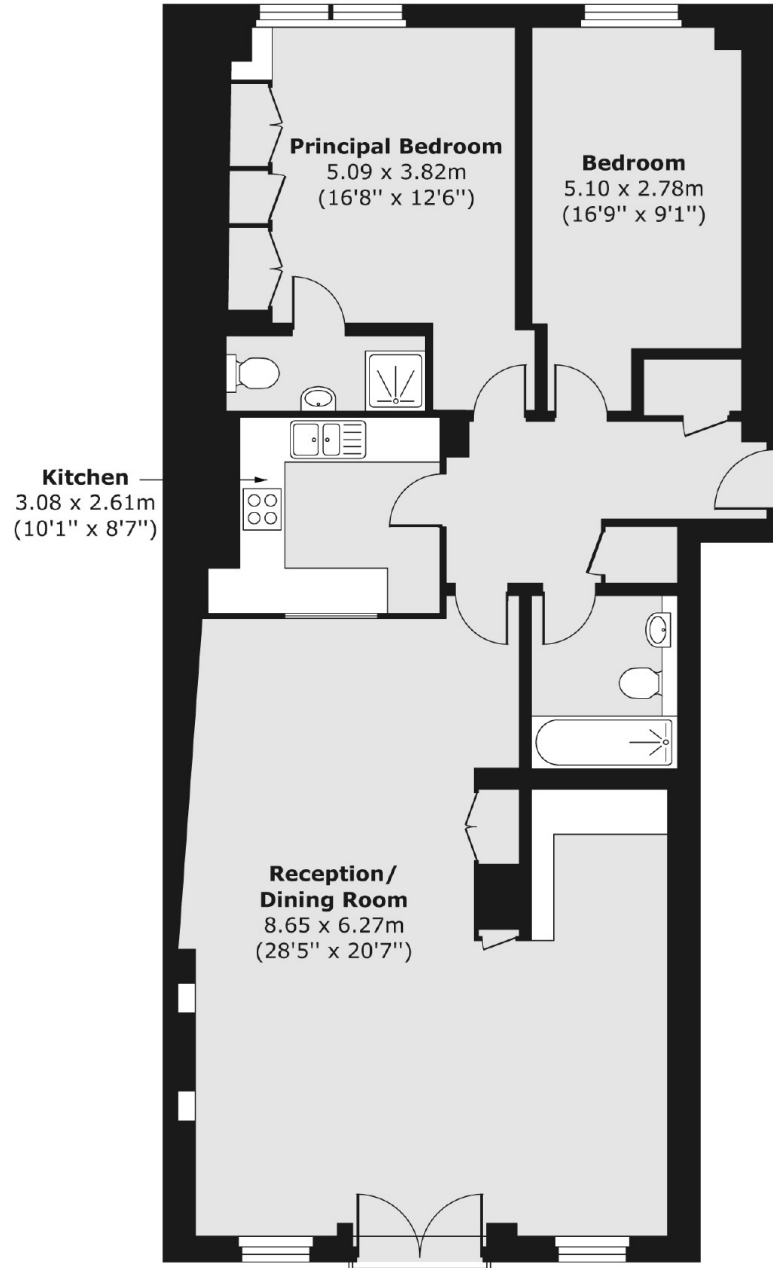
Located close to Holborn and Covent Garden underground stations, Aria House is located close to Covent Garden providing access to great shopping, theatres, restaurants and transport.

### Features

- Two Double Bedrooms
- Underground Parking
- Lift Access
- Two Bathrooms
- 975 Year Lease
- Offers in Excess of £950,000

# Newton Street, London, WC2B

## Second Floor



Total area (approx.) 105.29 sq. m (1,133 sq. ft)