



Southampton Row, WC1B

£1,300,000

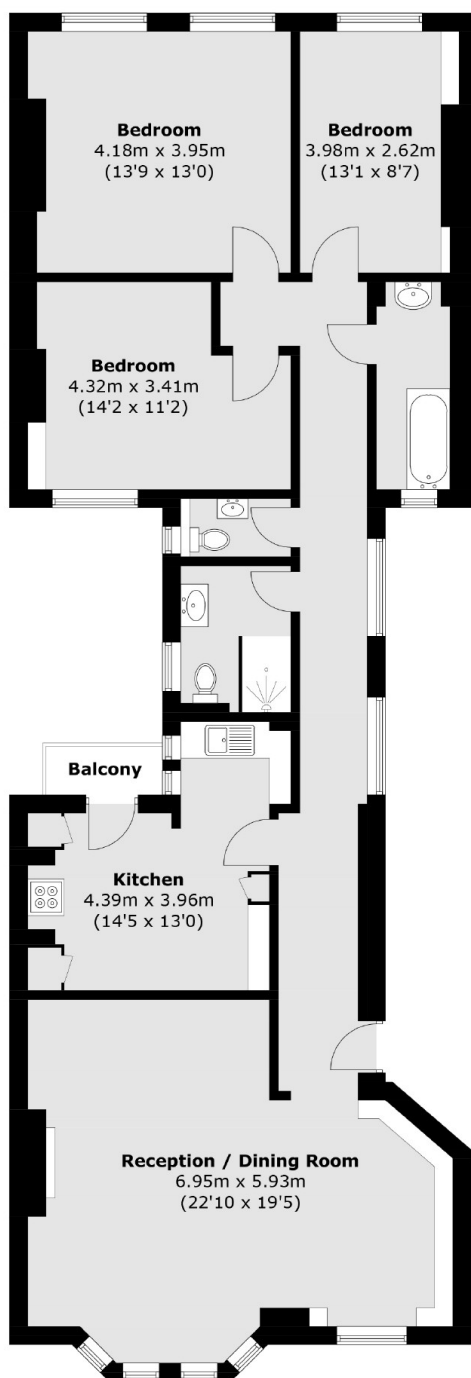
A large and beautifully presented three bedroom home with two bathrooms and a separate WC. The property includes a double reception room with a bay window and built in storage, an eat-in kitchen with balcony and long lease.

Ormonde Mansions is located between Holborn and Russell Square underground stations (Central and Piccadilly lines). There are garden squares, The British Museum and the West End on the doorstep.

Features

- Excellent Condition
- Three Double Bedrooms
- Double Reception Room
- High Ceilings
- Private Balcony
- 1300 Sq Ft

Southampton Row, London, WC1B



Third Floor

Total area (approx.): 121.0 sq. m (1,302.4 sq. ft)

Balcony (approx.): 1.5 sq. m (16.1 sq. ft)