

Newton Street, WC2B

£1,100,000

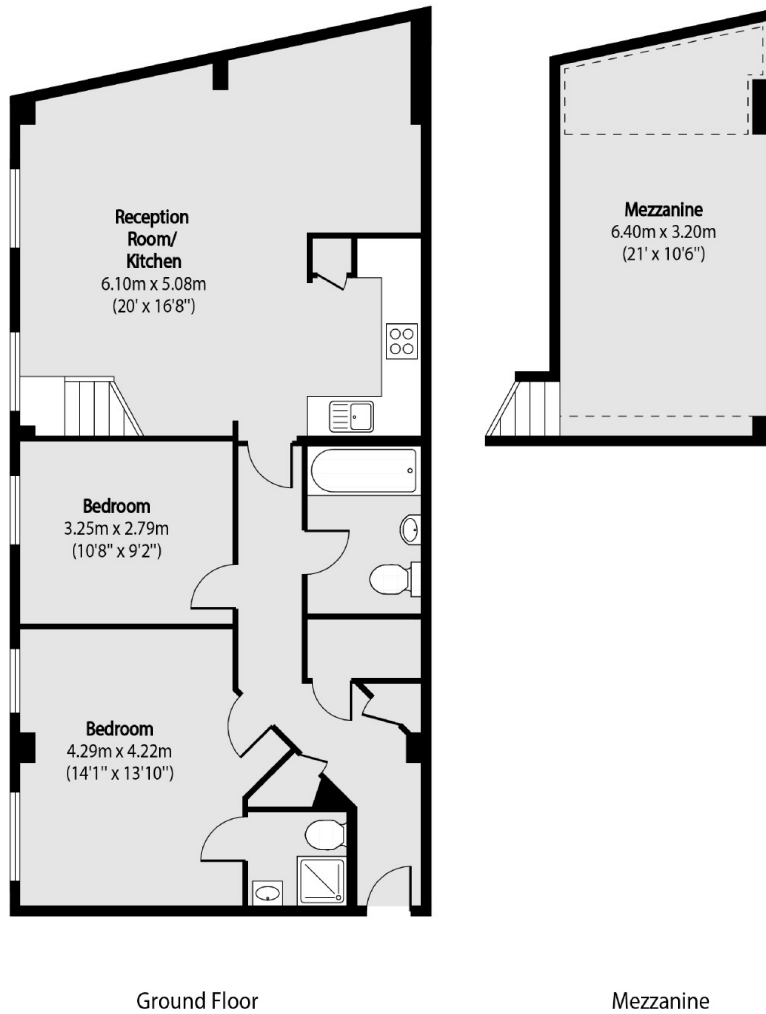
A well appointed two bedroom split-level apartment situated in a modern portered mansion building in an enviable location in Covent Garden. Additionally, the apartment includes the added benefit of allocated secure parking, ensuring peace of mind for residents with a vehicle.

Aria House is conveniently situated near the Holborn and Covent Garden underground stations, placing it right in the vibrant heart of Covent Garden. This prime location grants easy access to a plethora of excellent shopping options, theatres, restaurants, and transportation services.

Features

- Two Double Bedrooms
- Two Bathrooms
- Mezzanine
- Parking Spaces Included
- Portered Building
- Communal Garden
- Offers In Excess Of

Newton Street, London, WC2B



Total area (approx): 100.06 sq m (1077 sq. ft)