



Brock Street, NW1

£475,000

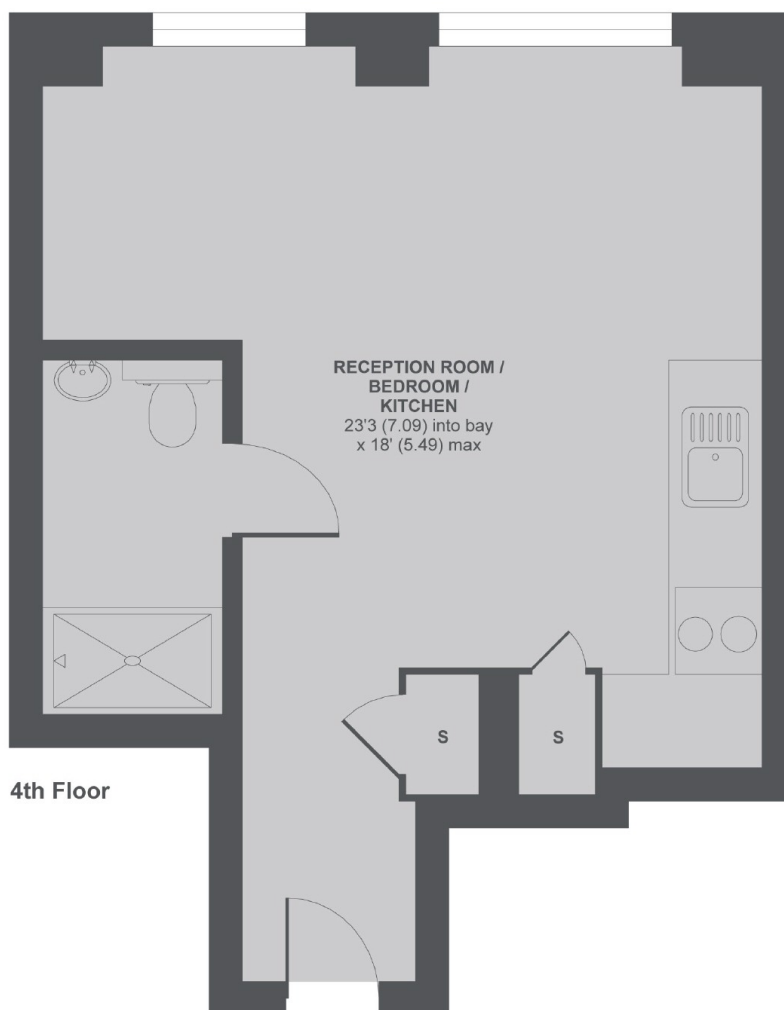
This deluxe studio apartment is situated on the fourth floor of a modern building with elegant interiors that span from the open-plan kitchen to the appealing shower room.

Located close to Regents Park, there is also excellent access to multiple Tube lines; within easy walking distance to Warren Street and Euston Square Tube stations and only 600 meters to Euston Mainline Station.

Features

- Studio Apartment
- Open Plan Kitchen
- Lift Access
- 24 Hour Concierge
- 989 Years Lease
- No Onward Chain

Brock Street,
London, NW1



Brock Street, NW1

MAIN HOUSE APPROX FLOOR AREA 343 SQ.FT 31.9 SQ.M

Copyright nichecom.co.uk 2017 REF : 236774

Dexters

Bloomsbury
55-56 Coram Street
London
WC1N 1HB
Sales
020 7833 4466

Energy Rating: D. We aim to make our particulars both accurate and reliable. However they are not guaranteed; nor do they form part of an offer or contract. If you require clarification on any points then please contact us, especially if you're traveling some distance to view. Please note that appliances and heating systems have not been tested and therefore no warranties can be given as to their good working order.

 **RICS** | Regulated
Estate Agent
and Letting Agent

dexters.co.uk