

Newton Street, WC2B

£900,000

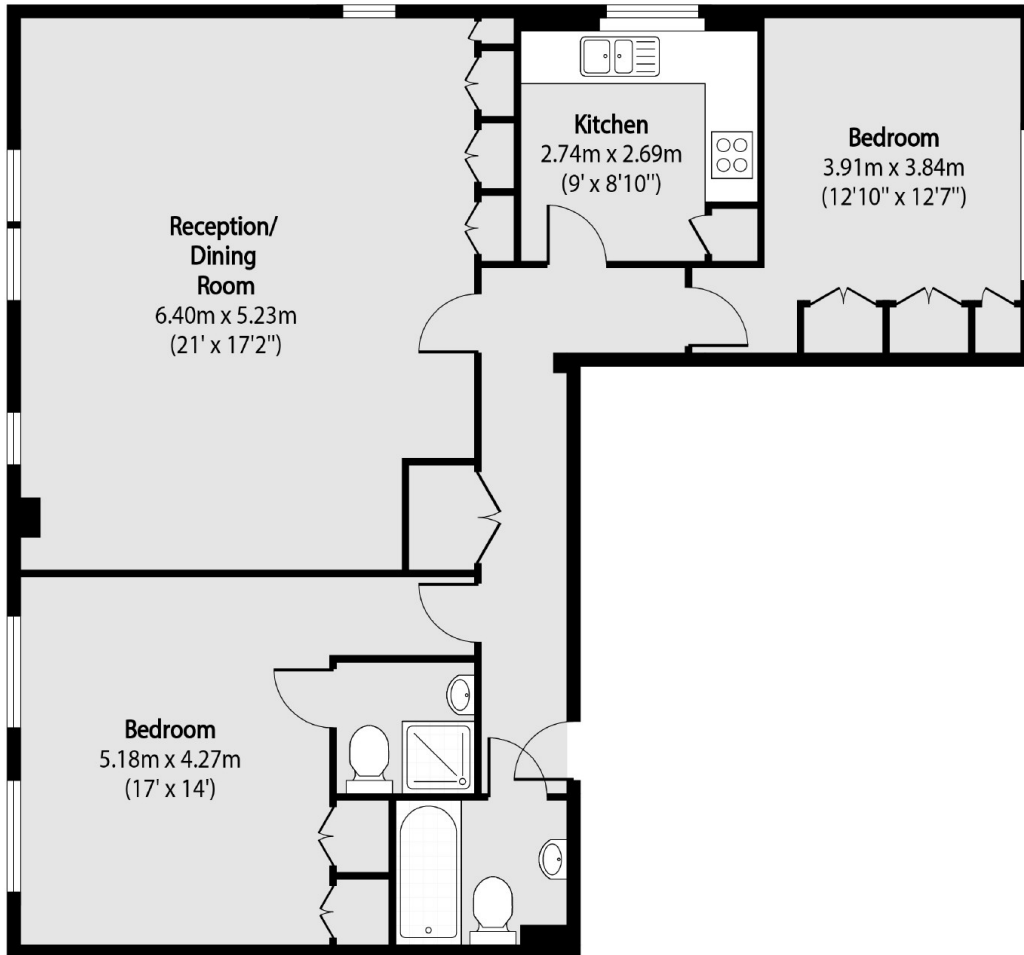
This is a wonderful opportunity to own a spacious and well-proportioned two bedroom flat situated on the top floor of a well regarded portered building, the property is conveniently located between Covent Garden and Holborn on the borders of the West End and City.

Located close to Holborn and Covent Garden underground stations, Aria House is set within the heart of Covent Garden providing access to great shopping, theatres, restaurants and transport.

Features

- Two Double Bedrooms
- Two Bathrooms
- Two Parking Spaces Included
- Portered Building
- Shared Courtyard
- Lift Access

Newton Street, London, WC2B



Total area (approx): 88.26 sq m (950 sq. ft)