



## Newton Street, WC2B

£1,100,000

This is a wonderful opportunity to own a spacious and well-proportioned two bedroom flat situated on the top floor of a well regarded portered building, the property is conveniently located between Covent Garden and Holborn on the borders of the West End and City.

Located close to Holborn and Covent Garden underground stations, Aria House is set within the heart of Covent Garden providing access to great shopping, theatres, restaurants and transport.

### Features

- Two Double Bedrooms
- Two Bathrooms
- Two Parking Spaces Included
- Portered Building
- Shared Courtyard
- Lift Access



## Newton Street, WC2B

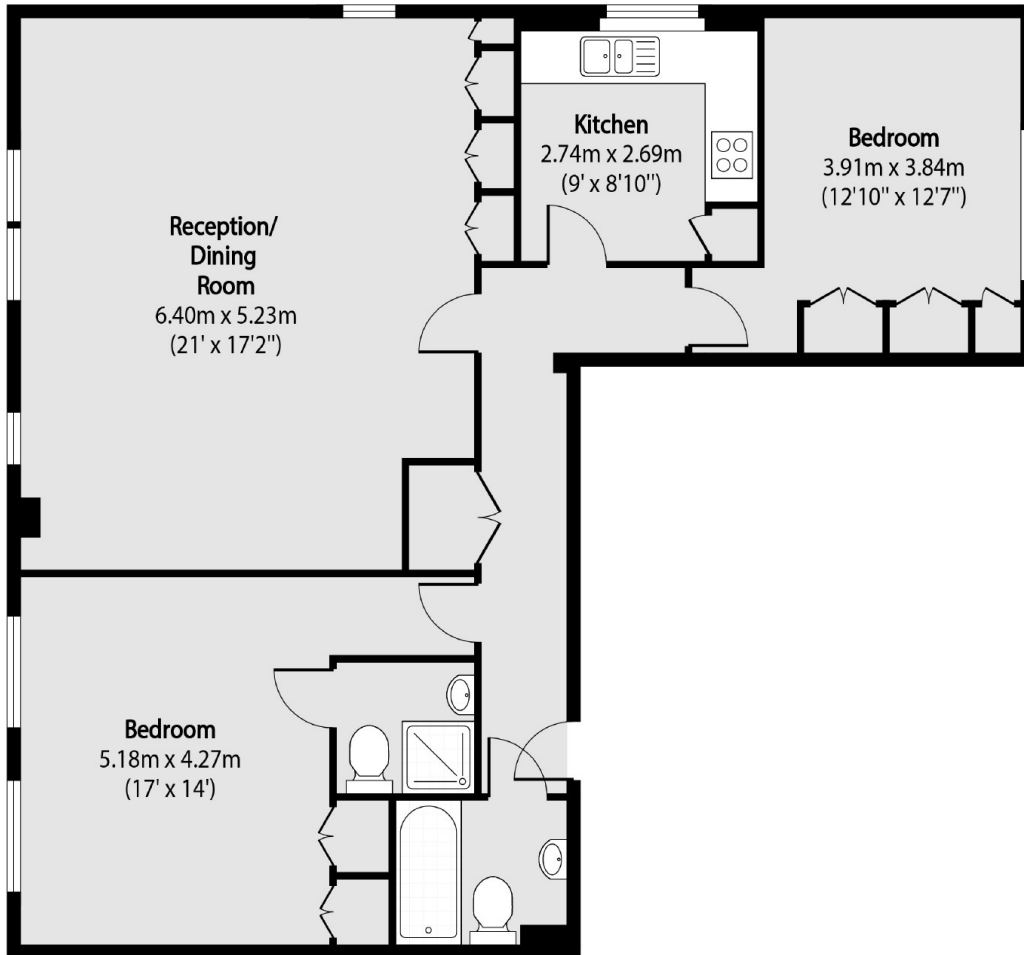
The flat has a generously sized reception room with a dual aspect that provides ample natural light, as well as featuring beautiful wood floors throughout the apartment. In addition, there is a separate kitchen, two double bedrooms (one of which has an en-suite shower room), and a separate guest bathroom, providing plenty of living space.

Aria House is a well-maintained building with the added bonus of a day porter, a lift that serves all floors, and a communal garden for residents to enjoy. This particular apartment also comes with the convenience of two secure underground parking spaces, making it a particularly attractive investment opportunity.

Overall, this is a fantastic chance to own a well-appointed and conveniently located two bedroom flat in an area that is highly sought after by investors and residents alike.



# Newton Street, London, WC2B



Total area (approx): 88.26 sq m (950 sq. ft)