



Tavistock Place, WC1H

£1,100,000

A beautifully appointed two double bedroom home with a well-established and private garden to the rear. The property is in excellent condition and would make an ideal London base, or family home.

Tavistock Place is located close to Russell Square, The Brunswick shopping centre and King's Cross station. Other attractions include The British Library, The British Museum and Covent Garden.

Features

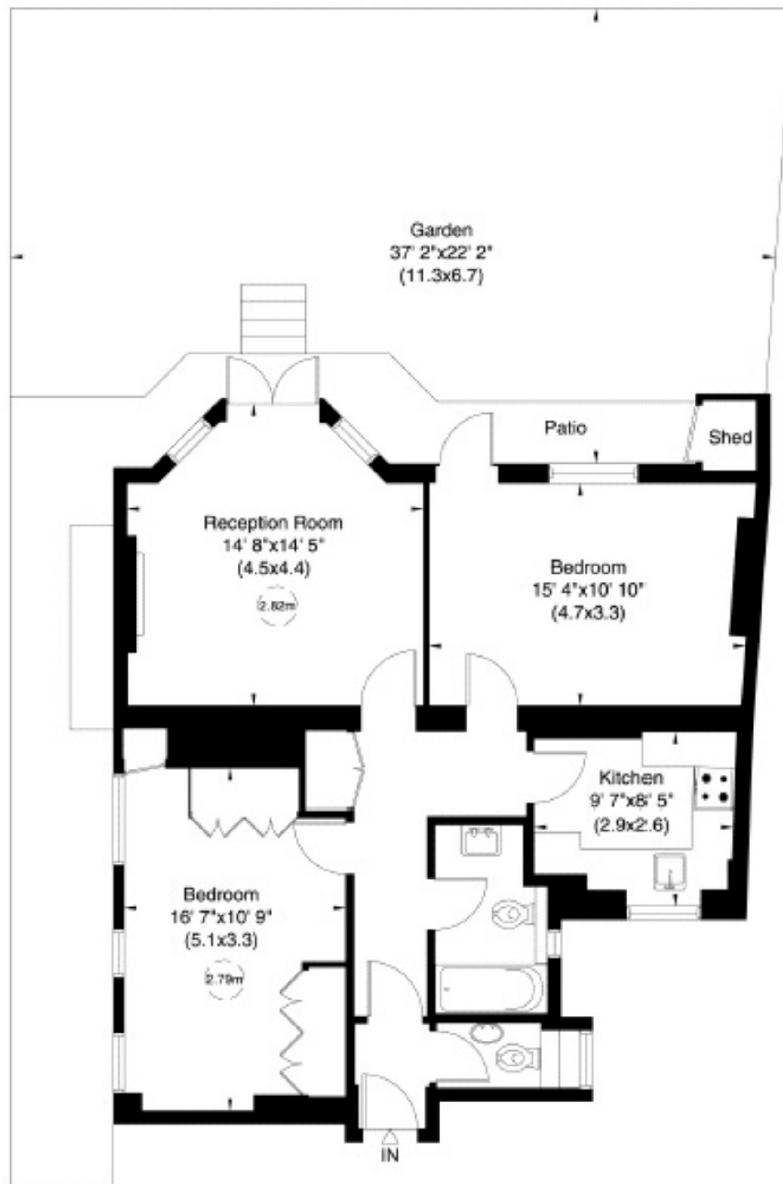
- Secluded Private Garden
- Separate Kitchen
- Two Double Bedrooms
- Beautifully Presented
- Central Bloomsbury
- Close to Transport



Tavistock Place, WC1H



Tavistock Place, London, WC1H



Lower Ground Floor

Not to scale, for guidance only and must not be relied upon as a statement of fact. All measurements and areas are approximate only (and have been prepared in accordance with the current edition of the RICS Code of Measuring Practice).