



Mount Pleasant, WC1X

£450,000

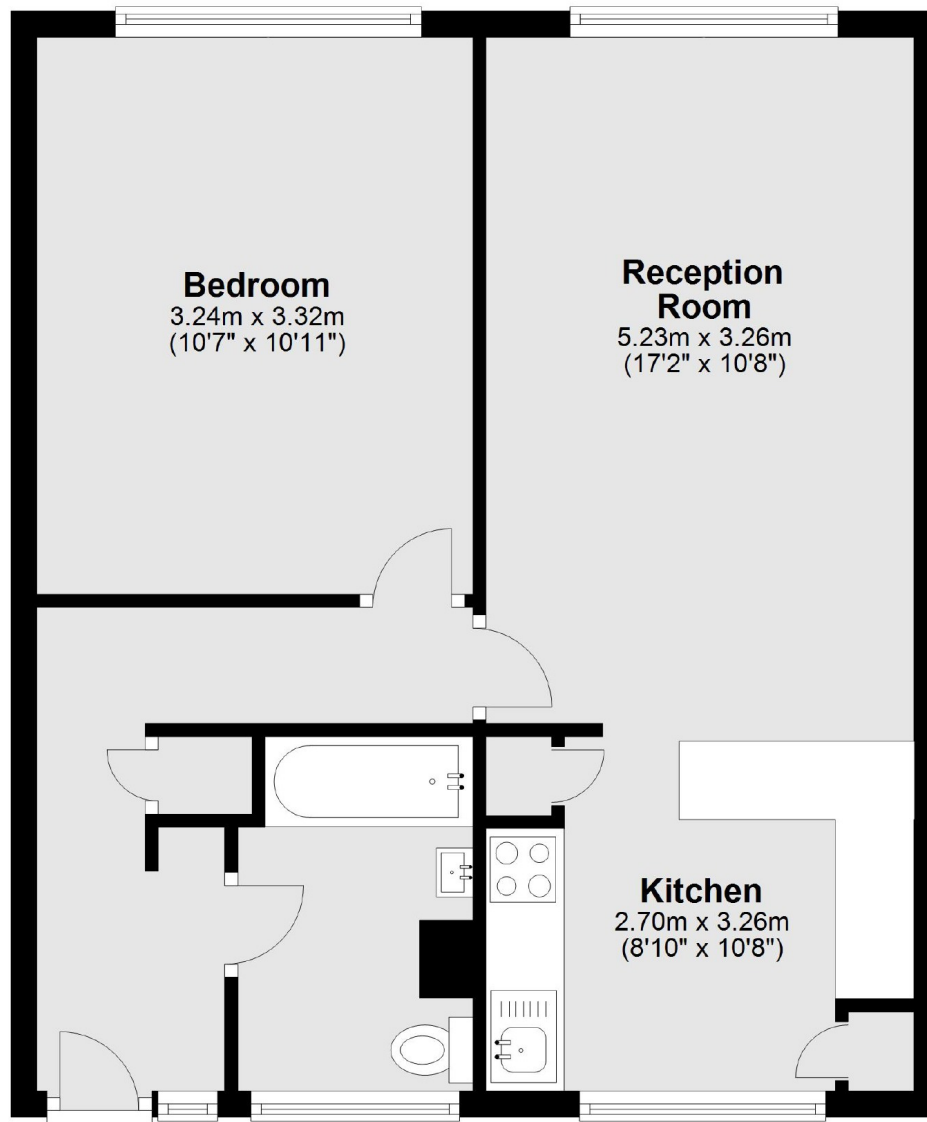
Offers in Excess of: This spacious and bright one bedroom flat, comprising a large master bedroom, recently refurbished kitchen and modern bathroom boasts excellent location - situated just moments from the shops, bars and restaurants of Exmouth Market - and enviable transport links, with newly opened Crossrail at Farringdon just a few minutes' walk away.

Mullen Towers is within easy walking distance of Bloomsbury, Farringdon & Chancery Lane underground stations. Also in close reach to the Cross Rail, and Exmouth Market the property offers much to do on its door steps.

Features

- One Bedroom
- Recently Refurbished
- Low Service Charge
- Sought After Location
- No Onward Chain
- Great Transport Links

Mount Pleasant, London, WC1X



Total area: approx. 53.6 sq. metres (577.3 sq. feet)