



Vine Hill, EC1R

£699,995

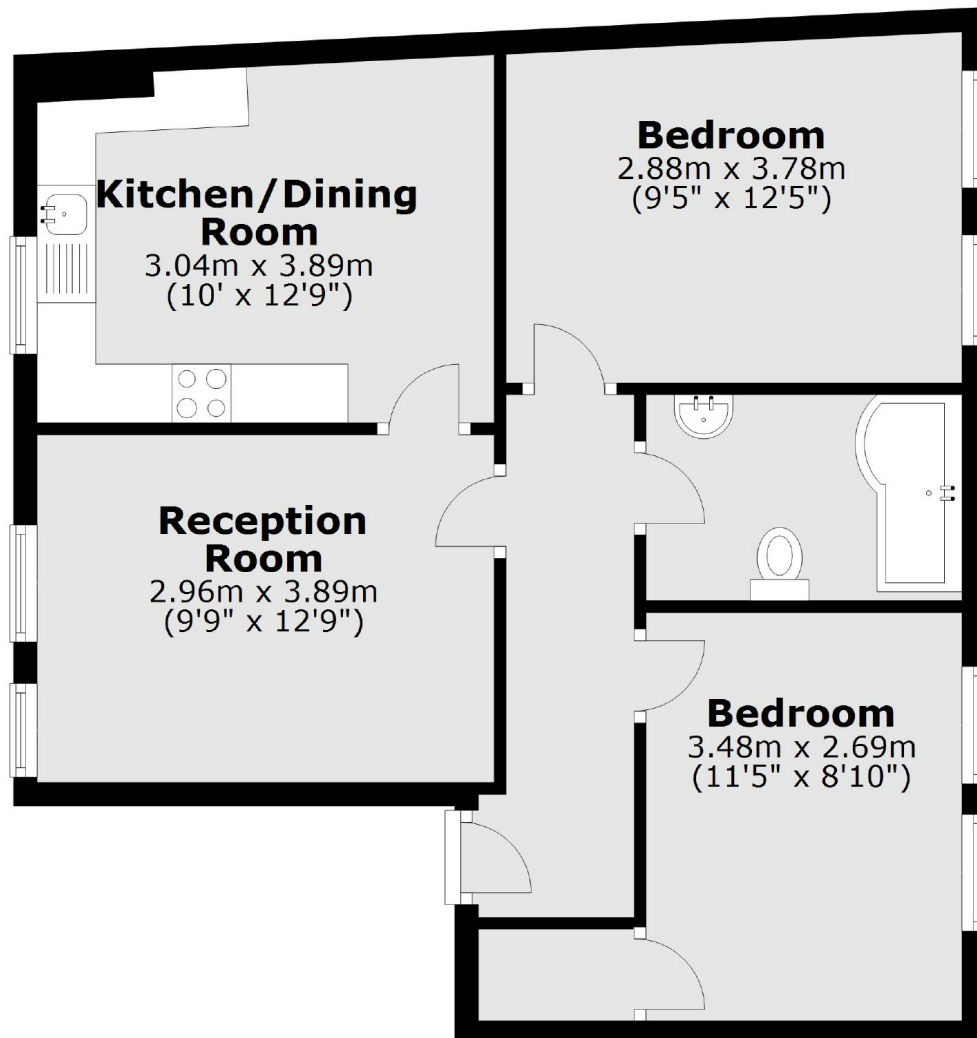
Located within a Victorian conversion and in excellent condition throughout, the property has two double bedrooms, a separate living room, eat-in kitchen and family bathroom.

Vine Hill is located close to Hatton Garden, Gray's Inn and a large array of shopping and well regarded eateries. The nearest stations are Chancery Lane and Farringdon which includes the newly operational Crossrail.

Features

- Two Double Bedrooms
- Share Of Freehold
- Separate Living Room
- Excellent Condition
- Re-fitted Kitchen/Bathroom
- No Onward Chain

Vine Hill,
London, EC1R



Total area: approx. 57.2 sq. metres (615.5 sq. feet)