



Bernard Street, WC1N

£760,000

A one double bedroom home located on the second floor of a period mansion block. There is an open plan kitchen/reception with high ceilings and large windows, a double bedroom with storage, family bathroom and private outside terrace.

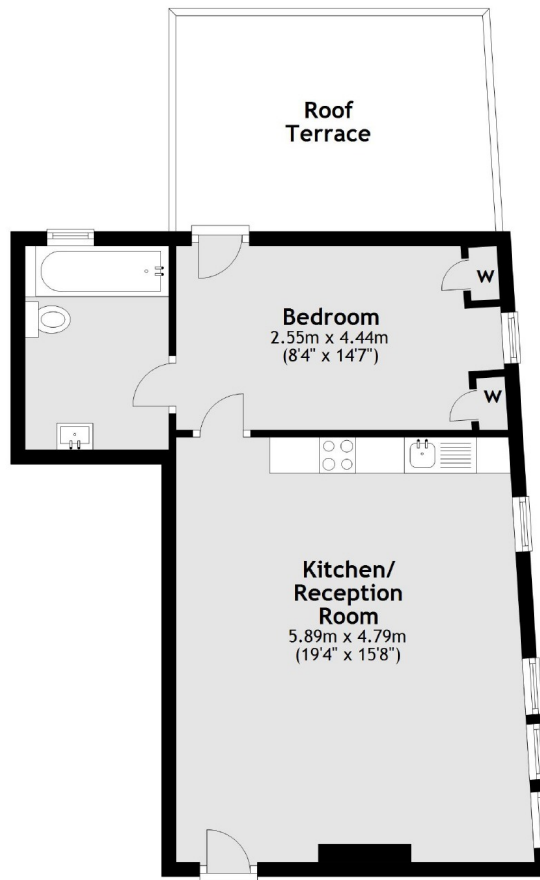
Bernard Mansions is located opposite Russell Square Underground, local amenities include a Waitrose as well as a vast array of eateries and shopping outlets including the Brunswick Centre.

Features

- Central Bloomsbury
- Close To Transport
- Share Of Freehold
- Private Terrace
- High Ceilings
- Large Windows

Bernard Street, London, WC1N

First Floor



Total area: approx. 46.1 sq. metres (496.1 sq. feet)