



Judd Street, WC1H

£300 Per week

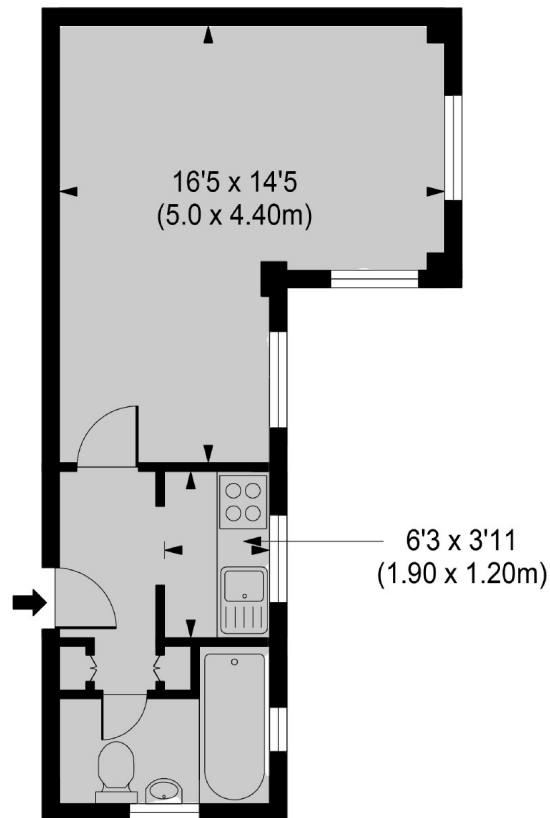
A large studio in a well maintained Art Deco building with a daytime porter and lift access. It has a large living space with a separate kitchen with a washing machine. Hot water and heating bills are included within the rent.

Clare Court is a very well located art deco mansion building a short walk from Brunswick Centre and Russell Square. It is portered and has two lifts to all floors. It is also very well located for Kings Cross, UCL and SOAS.

Features

- Large Studio Space
- Concierge
- Separate Kitchen
- Hot Water & Heating Inc
- Lift Access
- Furnished

Judd Street, London, WC1H



Gross Internal Area 290 sq ft/ 27 sq meters

Contact

To arrange a viewing call our office on the number below or visit our website.



Energy Rating: D. We aim to make our particulars both accurate and reliable. However they are not guaranteed; nor do they form part of an offer or contract. If you require clarification on any points then please contact us, especially if you're traveling some distance to view. Please note that appliances and heating systems have not been tested and therefore no warranties can be given as to their good working order.