



## Orde Hall Street, WC1N

£690 Per week

A four double bedroom with no reception on the ninth floor of this purpose built block with lift. There is a separate modern kitchen, shower room and separate WC. The apartment has wood flooring throughout, is offered furnished and ideal for student sharer's.

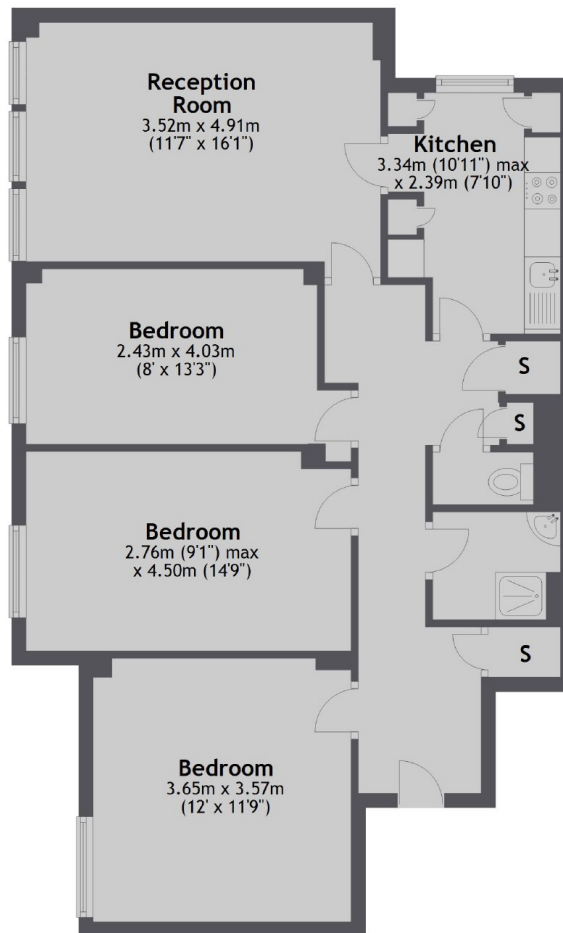
Babington Court is located on Orde Hall Street which is a short walk to Holborn Tube Station, Brunswick Centre, UCL and LSE. It is also within walking distance of Russell Square tube station and Chancery Lane tube Station.

### Features

- Four Double Bedrooms
- No Reception Room
- Lift Access
- Additional WC
- Ideal For Sharers
- Wood Flooring Throughout

## Orde Hall Street, London, WC1N

### Floor 9



Total area: approx. 79.5 sq. metres (855.7 sq. feet)

### Contact

To arrange a viewing call our office on the number below or visit our website.



Energy Rating: C. We aim to make our particulars both accurate and reliable. However they are not guaranteed; nor do they form part of an offer or contract. If you require clarification on any points then please contact us, especially if you're traveling some distance to view. Please note that appliances and heating systems have not been tested and therefore no warranties can be given as to their good working order.