



Spencer.

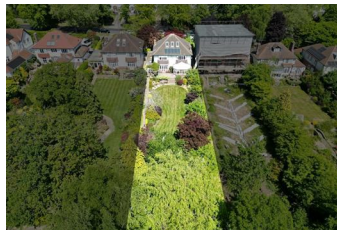
453, Whirlowdale Road, Whirlow, S11 9NG

Buy —

A fabulous detached family home with extensive south facing gardens and excellent proportions throughout

— from *Spencer.*

- A wonderful detached four bedroomed family home with huge garden
- Lovely south facing living room with conservatory
- Separate dining room with French doors to the garden and study to the front of the property
- Breakfasting kitchen with access to the attached garage and pantry. Ground floor cloakroom.
- Four good double bedrooms, the principle bedroom with en-suite wet room. Bathroom and separate WC
- Large attic room with potential for further accommodation, subject to consents
- Incredible extensive lawned and enclosed south facing gardens and off-street parking for multiple cars
- Sheffield City Council Tax Band G
- EPC Rating C - potential B



Offers Around

£985,000







Floorplan



Total area: approx. 264.8 sq. metres (2850.3 sq. feet)

All measurements are approximate
To outline DPC & Floor Plans, Ltd.
Plan produced using PlanIt.

453 Whirlowdale Road

Spencer.

+44 (0)114 268 3682

info@spencersestateagents.co.uk

469 Ecclesall Road, Sheffield, S118PP

SpencersEstateAgents.co.uk

SpencersAgents

SpencersAgents

SpencersEstateAgents

All enquiries and negotiations conducted via the Spencers office. We are obliged under the Estate Agent Act 1991 to qualify all offers and an independent mortgage consultant will speak to you to substantiate your details. The particulars are set out as a general outline only for guidance and do not constitute part of an offer or contract. Measurements are given in good faith and believed to be correct. Any prospective buyer should satisfy themselves as to the correctness of all statements and should not rely on them as representation of fact. No person in the employment of Spencers has any authority to make or give representation or warranty whatever in relation to this property.

Viewing: Via the Agents

Spencers Agents Ltd, 469 Ecclesall Road, Sheffield S11 8PP | Registered in England No. 7565948