



Spencer.

53, Norfolk Road, Norfolk Park, S2 2SW

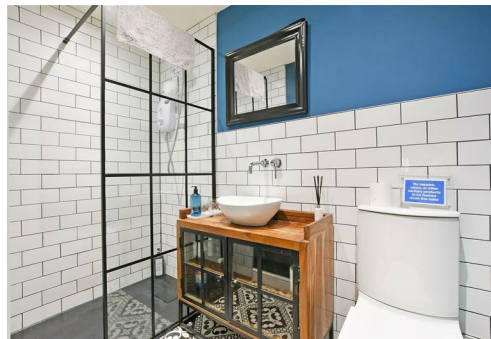
Buy —

A stunning, substantial four double bedroom, period detached home with open plan living, generous patio entertaining space, enclosed garden and separate self-contained guest suite.
— from *Spencer.*

- Stunning detached period home
- Four double bedrooms
- Open plan kitchen/diner/snug and beautiful Lounge
- Family bathroom, ensuite and downstairs WC
- Large garden with fabulous entertaining patio
- Separate guest suite/ Air BnB income generator (£15-20K per annum)
- Off street parking
- Council Tax Band-E
- EPC Rating-D
- [What3words:///found.origin.adde](#)

Offers Around

£680,000









Floorplan

53 NORFOLK ROAD

APPROXIMATE GROSS INTERNAL AREA = 212.3 SQ M / 2184 SQ FT

CELLAR = 25.6 SQ M / 275 SQ FT

OUTBUILDING = 34.1 SQ M / 367 SQ FT

TOTAL = 272.0 SQ M / 2826 SQ FT



Illustration for identification purposes only, measurements are approximate, not to scale.

Spencer.

+44 (0)114 268 3682
info@spencersestateagents.co.uk

469 Ecclesall Road, Sheffield, S11 8PP
SpencersEstateAgents.co.uk

SpencersAgents
SpencersAgents
SpencersEstateAgents

All enquiries and negotiations conducted via the Spencers office. We are obliged under the Estate Agent Act 1991 to qualify all offers and an independent mortgage consultant will speak to you to substantiate your details. The particulars are set out as a general outline only for guidance and do not constitute part of an offer or contract. Measurements are given in good faith and believed to be correct. Any prospective buyer should satisfy themselves as to the correctness of all statements and should not rely on them as representation of fact. no person in the employment of Spencers has any authority to make or give representation or warranty whatever in relation to this property.

Viewing: Via the Agents
Spencers Agents Ltd, 469 Ecclesall Road, Sheffield S11 8pp | Registered in England No. 7565948