



Spencer.

**Onslow Cottage, Botanical Road, Botanical
Gardens. S11 8RP**

Buy —

this superbly-presented two double bedroom cottage with private terrace, stunning communal gardens and garage parking.

— from *Spencer.*

- Superbly presented two double bedroom cottage
- Open plan kitchen/diner
- Stunning lounge
- Separate downstairs WC and bathroom
- Private terrace set in beautiful communal gardens
- Garage parking
- Excellent location in proximity to the Botanical Gardens
- Council Tax Band-D
- EPC Rating-D
- What3words:///last.score.lakes

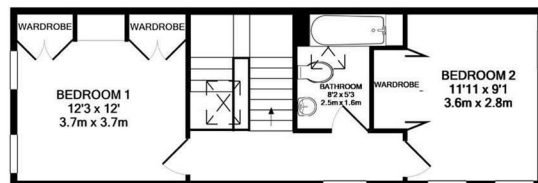
Offers Around

£375,000





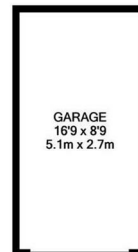
Floorplan



1ST FLOOR



GROUND FLOOR



OUTBUILDING

THE GARAGE IS NOT INCLUDED IN THE TOTAL FLOOR AREA
TOTAL APPROX. FLOOR AREA 883 SQ.FT. (82.0 SQ.M.)

Whilst every attempt has been made to ensure the accuracy of the floor plan contained here, measurements of doors, windows, rooms and any other items are approximate and no responsibility is taken for any error, omission, or mis-statement. This plan is for illustrative purposes only and should be used as such by any prospective purchaser. The services, systems and appliances shown have not been tested and no guarantee as to their operability or efficiency can be given

Made with Metropix ©2020



Spencer.

+44 (0)114 268 3682
info@spencersestateagents.co.uk

469 Ecclesall Road, Sheffield, S11 8PP
SpencersEstateAgents.co.uk

SpencersAgents
SpencersAgents
SpencersEstateAgents

All enquiries and negotiations conducted via the Spencers office. We are obliged under the Estate Agent Act 1991 to qualify all offers and an independent mortgage consultant will speak to you to substantiate your details. The particulars are set out as a general outline only for guidance and do not constitute part of an offer or contract. Measurements are given in good faith and believed to be correct. Any prospective buyer should satisfy themselves as to the correctness of all statements and should not rely on them as representation of fact. No person in the employment of Spencers has any authority to make or give representation or warranty whatever in relation to this property.

Viewing: Via the Agents
Spencers Agents Ltd, 469 Ecclesall Road, Sheffield S11 8PP | Registered in England No. 7565948