



*Spencer.*

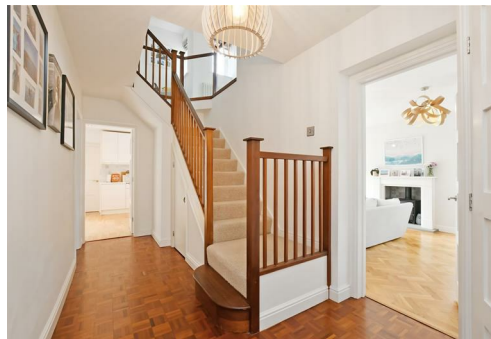
**26, Wentworth Avenue, Whirlow, S11 9QX**



**Buy** ———  
this simply stunning four bedroom detached family home situated in this fabulous location in Whirlow, S11

——— from *Spencer.*

- Beautifully presented four double bedroom detached family home
- Thoughtfully extended and offering fabulous accommodation throughout
- Stunning wrap around garden with sun-soaked patio seating area
- Three reception rooms, dining kitchen and separate utility area
- Modern family bathroom, en-suite shower room and downstairs WC
- Off-street parking, ample garage and excellent home office with wifi connection
- Excellent location and excellent school catchment area
- Council Tax- F
- EPC - C
- What Three Words///freed.shops.splice



**£850,000**







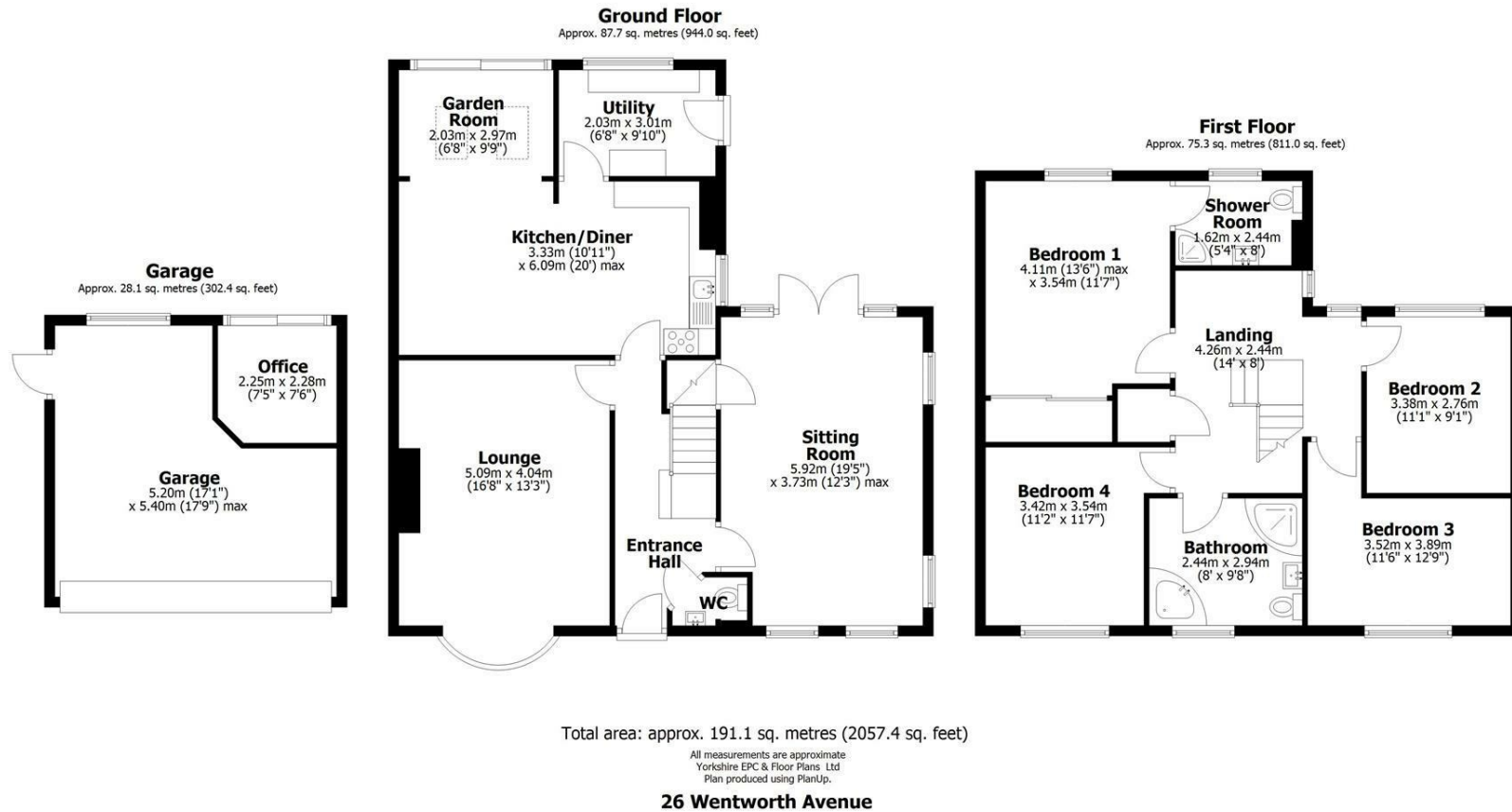








# Floorplan



Spencers.

+44 (0)114 268 3682  
info@spencersestateagents.co.uk

469 Ecclesall Road, Sheffield, S11 8PP  
SpencersEstateAgents.co.uk

SpencersAgents  
SpencersAgents  
SpencersEstateAgents

All enquiries and negotiations conducted via the Spencers office. We are obliged under the Estate Agent Act 1991 to qualify all offers and an independent mortgage consultant will speak to you to substantiate your details. The particulars are set out as a general outline only for guidance and do not constitute part of an offer or contract. Measurements are given in good faith and believed to be correct. Any prospective buyer should satisfy themselves as to the correctness of all statements and should not rely on them as representation of fact. no person in the employment of Spencers has any authority to make or give representation or warranty whatever in relation to this property.

Viewing: Via the Agents  
Spencers Agents Ltd, 469 Ecclesall Road, Sheffield S11 8pp | Registered in England No. 7565948