



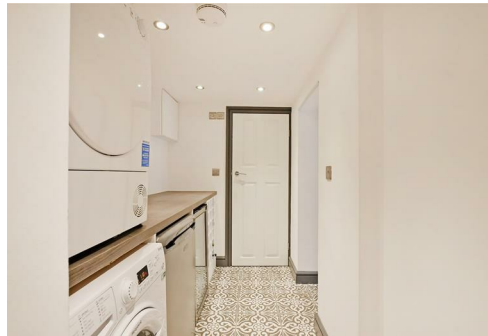
Spencer.

28, Montrose Road, Carter Knowle, S7 2EE

Buy ———
this beautifully presented and modernised 5/6
bedroom period family home with a wealth of flexible
accommodation is superbly located with excellent
school catchment.
————— from *Spencer.*

- Superb 5/6 bedroom semi detached period family home
- Flexible accommodation set over 4 floors
- Beautifully renovated and updated
- Many period features remaining
- Low maintenance garden ideal for summer dining
- Excellent School catchment and local amenities
- Ample off street Parking
- Council Tax Band D
- EPC Rating D
- what three words///
pinks.farms.achieving

£585,000









Floorplan

28 MONTROSE ROAD

APPROXIMATE GROSS INTERNAL AREA = 166.2 SQ M / 1789 SQ FT

BASEMENT = 50.4 SQ M / 542 SQ FT

TOTAL = 216.6 SQ M / 2331 SQ FT

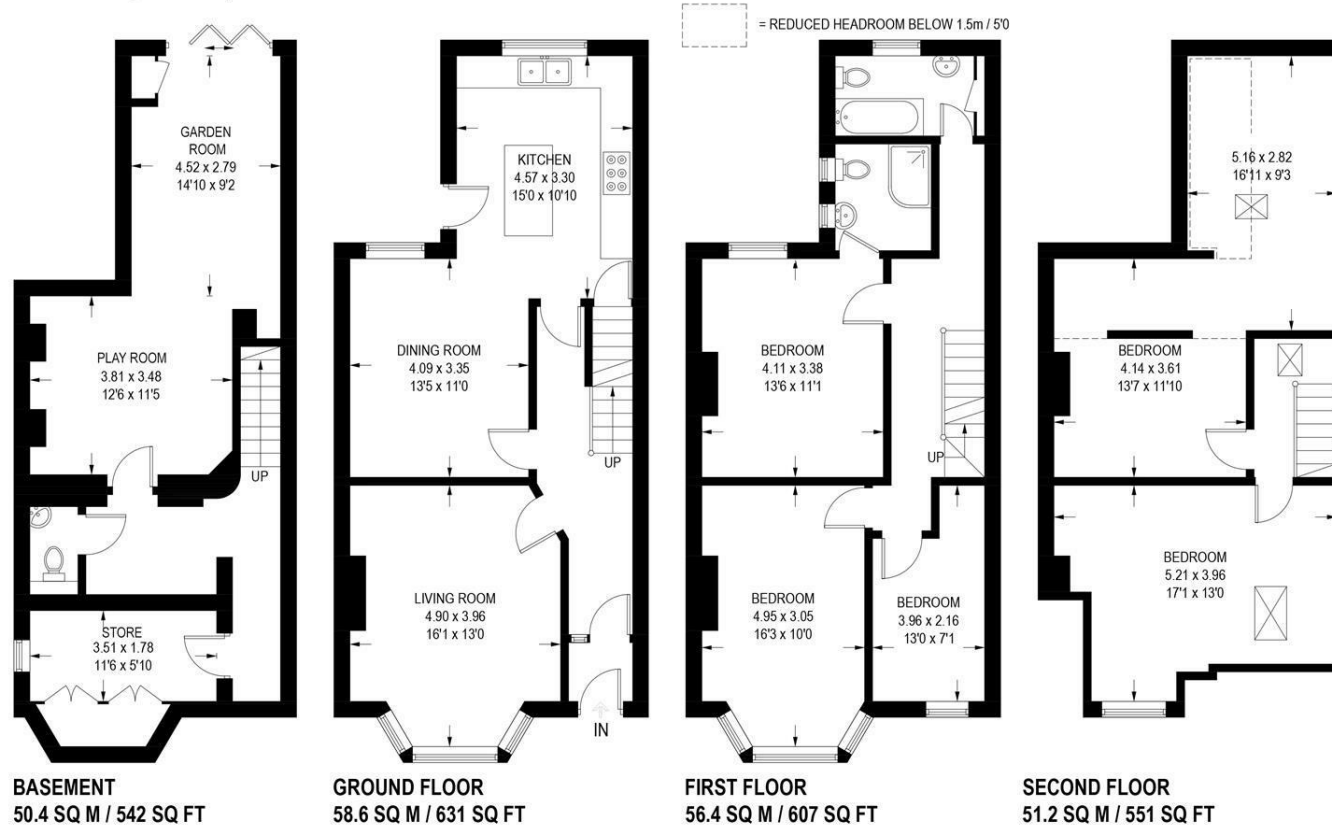


Illustration for identification purposes only, measurements are approximate, not to scale.

Spencer.

+44 (0)114 268 3682
info@spencersestateagents.co.uk

469 Ecclesall Road, Sheffield, S11 8PP
SpencersEstateAgents.co.uk

SpencersAgents
SpencersAgents
SpencersEstateAgents

All enquiries and negotiations conducted via the Spencers office. We are obliged under the Estate Agent Act 1991 to qualify all offers and an independent mortgage consultant will speak to you to substantiate your details. The particulars are set out as a general outline only for guidance and do not constitute part of an offer or contract. Measurements are given in good faith and believed to be correct. Any prospective buyer should satisfy themselves as to the correctness of all statements and should not rely on them as representation of fact. no person in the employment of Spencers has any authority to make or give representation or warranty whatever in relation to this property.

Viewing: Via the Agents
Spencers Agents Ltd, 469 Ecclesall Road, Sheffield S11 8pp | Registered in England No. 7565948